

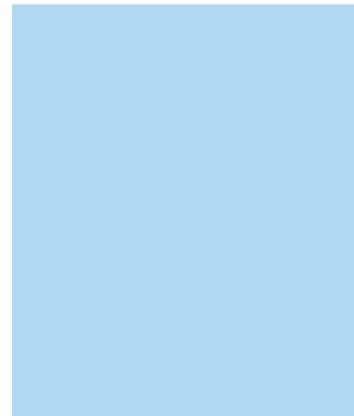


All Portable Spas

Manufactured after February 28, 2010

2010 OWNER'S MANUAL

United States and Canada



© 2010 LMS, Inc.



Cal Spas Home Resort™

www.calspas.com

Preparing for Your New Portable Spa

| | |
|--|----|
| Planning the Best Location | 3 |
| Preparing a Good Foundation | 3 |
| 120 Volt Electrical Installation | 4 |
| 240 Volt Electrical Installation | 4 |
| GFCI Wiring Diagram | 7 |
| Gas Heater Hook up | 8 |
| Filling and Powering Up Your Portable Spa | 10 |
| Priming the Pump | 11 |

Operating Your Spa

| | |
|---|----|
| VL406, 6200, and 6300 Electronic Control Operation | 12 |
| 9800 Electronic Control Operation | 14 |
| “Sounds Good” System Operation | 17 |
| Auxiliary Control Panels | 17 |
| Periodic Reminder Messages | 18 |
| Diagnostic Messages | 18 |
| Electrical Power Efficiency | 20 |
| Jets | 21 |
| Diverter Knobs | 21 |
| Waterfalls | 21 |
| Air Venturis | 21 |
| Adjustable Therapy System | 22 |
| Wireless Spa Monitor | 22 |
| LED Perimeter Lighting | 23 |

Clear Water Plan

| | |
|---|----|
| The Key to Clear Water | 24 |
| Testing and Adjusting Spa Water | 25 |
| Sanitation | 26 |
| About the Pure XL Water Sanitizer | 28 |

| | |
|--|----|
| Filter Cleaning | 28 |
| Bather Load | 29 |
| Starting the Spa with Fresh Water | 29 |
| Maintenance Schedule | 30 |
| Ozonator | 30 |
| Cal Clarity Bromine Generator | 31 |
| Troubleshooting Water Clarity Problems | 33 |

Cleaning and Maintenance

| | |
|---|----|
| Removing and Reseating the Pillows | 34 |
| Spa Cover | 34 |
| Draining Your Portable Spa | 35 |
| Cleaning and Replacing the Filter | 35 |
| Winterizing (Cold Climate Draining) | 36 |
| Vacation Care | 36 |
| Cleaning Your Spa | 37 |
| Jet Removal and Replacement | 38 |

Using the Entertainment System

| | |
|--|----|
| Listening to the Radio | 39 |
| Inserting and Ejecting a Disk | 39 |
| Playing a CD | 39 |
| Using the AQ-DM-2 iPod Docking Station | 40 |
| Using the iSound Remote Music System | 41 |
| About the SunBriteTV Monitor | 41 |

Appendix

| | |
|-------------------------------------|----|
| Replacement Parts | 42 |
| Keeping Fit with your Spa | 50 |
| Cal Spas™ Chemicals | 55 |
| 2010 Warranty | 56 |
| Warranty Registration | 58 |

CONTACT INFORMATION

For customer service, please contact your authorized dealer immediately. If you need additional information and/or assistance, contact:

LMS Customer Service Department
1462 East Ninth Street
Pomona, CA 91766.

Toll Free: 1-800-CAL-SPAS
Fax: 1-909-629-3890

Copyright 2009-2010 LMS, Inc. All rights reserved. Duplication without written consent is strictly prohibited.

Cal Spas®, Adjustable Therapy System™, ATS™, Cal Premium™, Cal Select™, Cal Stone™ Ultimate Fitness Spa Series™, and XL Heat Exchanger™ are registered trademarks.

Due to continuous improvement programs, all models, operation, and/or specifications are subject to change without prior notice.

LTR20101000, Rev. G
10/21/10
100-907

Important Safety Instructions

READ AND FOLLOW ALL INSTRUCTIONS.

WARNING:

To reduce the risk of injury, do not permit children to use this product unless they are closely supervised at all times.

DANGER -- Risk of accidental drowning:

Do not allow children to be in or around a spa unless a responsible adult supervises them. Keep the spa cover on and locked when not in use. See instructions enclosed with your cover for locking procedures.

DANGER -- Risk of injury:

The suction fittings in this spa are sized to match the specific water flow created by the pump. Should the need arise to replace the suction fittings, or the pump, be sure the flow rates are compatible.

Never operate the spa if the suction fitting or filter baskets are broken or missing. Never replace a suction fitting with one that is rated less than the flow rate marked on the original suction fitting.

DANGER -- Risk of electric shock:

Install the spa at least 5 feet (1.5 meters) from all metal surfaces. As an alternative, a spa may be installed within 5 feet of metal surfaces if each metal surface is permanently bonded by a minimum #8 AWG solid copper conductor to the outside of the spa's control box.

DANGER -- Risk of electric shock:

Do not permit any external electrical appliances, such as lights, telephones, radios, televisions, and etc., within five feet (1.5 meters) of the spa. Never attempt to operate any electrical device from inside the spa.

WARNING -- To reduce the risk of injury:

The spa water should never exceed 104°F (40°C). Water temperatures between 100°F (38°C) and 104°F (40°C) are considered safe for a healthy adult. Lower water temperatures are recommended for young children and when spa use exceeds 10 minutes.

High water temperatures have a high potential for causing fetal damage during pregnancy. Women who are pregnant, or who think they are pregnant, should always check with their physician prior to spa usage.

The use of alcohol, drugs or medication before or during spa use may lead to unconsciousness, with the possibility of drowning.

Persons suffering from obesity, a medical history of heart disease, low or high blood pressure, circulatory system problems or diabetes should consult a physician before using the spa.

Persons using medications should consult a physician before using the spa since some medications may induce drowsiness while others may affect heart rate, blood pressure and circulation.

HYPERTHERMIA DANGER:

Prolonged exposure to hot air or water can induce hyperthermia. Hyperthermia occurs when the internal temperature of the body reaches a level 3°F to 6°F above the normal body temperature of 98.6°F (or 2°C to 4°C above 37°C). While hyperthermia has many health benefits, it is important not to allow your body's core temperature to rise above 103°F (39.5°C).

Symptoms of excessive hyperthermia include dizziness, lethargy, drowsiness and fainting. The effects of excessive hyperthermia may include:

- Failure to perceive heat
- Failure to recognize the need to exit spa or hot tub
- Unawareness of impending hazard
- Fetal damage in pregnant women
- Physical inability to exit the spa
- Unconsciousness

WARNING: The use of alcohol, drugs, or medication can greatly increase the risk of fatal hyperthermia.

DANGER -- Risk of electric shock:

- Replace a damaged power cord immediately.
- Do not bury the power cord.
- Connect to a grounded, grounding-type receptacle only.

WARNING: People with infectious diseases should not use a spa or hot tub.

WARNING: To avoid injury, exercise care when entering or exiting the spa or hot tub.

WARNING: Do not use drugs or alcohol before or during the use of a spa or hot tub to avoid unconsciousness and possible drowning.

WARNING: Do not use a spa or hot tub immediately following strenuous exercise.

WARNING: Prolonged immersion in a spa or hot tub may be injurious to your health.

CAUTION: Maintain water chemistry in accordance with manufacturer's instructions.

SAVE THESE INSTRUCTIONS.

Preparing for Your New Portable Spa

Most cities and counties require permits for exterior construction and electrical circuits. In addition, some communities have codes requiring residential barriers such as fencing and/or self-closing gates on property to prevent unsupervised access to the property by children. Your dealer can provide information on which permits may be required and how to obtain them prior to the delivery of your spa.

Planning the Best Location

Safety First

Do not place your spa within 10 feet (3 m) of overhead power lines.

Consider How You Will Use Your Spa

How you intend to use your spa will help you determine where you should position it. For example, will you use your spa for recreational or therapeutic purposes? If your spa is mainly used for family recreation, be sure to leave plenty of room around it for activity. If you will use it for relaxation and therapy, you will probably want to create a specific mood around it.

Plan for Your Environment

If you live in a region where it snows in the winter or rains frequently, place the spa near a house entry. By doing this, you will have a place to change clothes and not be uncomfortable.

Consider Your Privacy

In a cold-weather climate, bare trees won't provide much privacy. Think of your spa's surroundings during all seasons to determine your best privacy options. Consider the view of your neighbors as well when you plan the location of your spa.

Provide a View with Your Spa

Think about the direction you will be facing when sitting in your spa. Do you have a special landscaped area in your yard that you find enjoyable? Perhaps there is an area that catches a soothing breeze during the day or a lovely sunset in the evening.

Keep Your Spa Clean

In planning your spa's location, consider a location where the path to and from the house can be kept clean and free of debris.

Prevent dirt and contaminants from being tracked into your spa by placing a foot mat at the spa's entrance where the bathers can clean their feet before entering your spa.

Allow for Service Access

Many people choose to install a decorative structure around their spa. If you are installing your spa with any type of structure on the outside, such as a gazebo, remember to allow access for service. It is always best to design special installations so that the spa can still be moved, or lifted off the ground.

Preparing a Good Foundation

Damage caused by inadequate or improper foundation support is not covered by the warranty.

It is the responsibility of the spa owner to provide a proper foundation for the spa.

We strongly recommend that you have a qualified, licensed contractor prepare the foundation for your spa.

Place the spa on a level foundation (preferably a 4" concrete slab). If you are installing the spa indoors, pay close attention to the flooring beneath it. Choose flooring that will not be damaged or stained.

If you are installing your spa on an elevated wood deck or other structure, consult a structural engineer or a contractor to ensure the structure will support the weight of 150 pounds per square foot.

120 Volt Electrical Installation

Always follow applicable local, state and federal codes and guidelines.

Use only a dedicated electrical line with a 20 amp breaker.

Cord-and-plug connections may not use a cord longer than 15 feet (4.6 m) and must be plugged into a dedicated 20 amp GFCI connection (NEC 680.42(A) (2)). Do not use extension cords!

Always use a weatherproof-covered receptacle.

Receptacle shall be located not less than 5 feet (1.5 m) from and not exceeding 10 feet (3.0 m) from the inside wall of the spa. (NEC 680.43(A))

Do not bury the power cord. If your cord becomes damaged, replace it before next usage.

All 120V spas must have a GFCI. This can be either a 20 amp GFCI receptacle or a 20 amp GFCI cord and plug kit as shown (CKIT110 - P/N ELE09700086).

Test the GFCI plug prior to first use and periodically when the spa is powered. To test the GFCI plug version, follow these instructions. (Spa should already be plugged in and operational.)

1. Press the TEST button on the GFCI. The GFCI will trip and the spa will stop operating.
2. Press the RESET button on the GFCI. The GFCI will reset and the spa will turn back on.

The spa is now safe to use.

If the GFCI trips while the spa is in use, press the RESET button. If the GFCI does not reset, unplug the spa and call your local Cal Spas dealer for service. **DO NOT USE THE SPA!**

240 Volt Electrical Installation

All 240V spas must be permanently connected (hardwired) to the power supply. See the wiring diagram on page 7.

These instructions describe the only acceptable electrical wiring procedure. Spas wired in any other way will void your warranty and may result in serious injury.

When installed in the United States, the electrical wiring of this spa must meet the requirements of National Electric Code, ANSI/NFPA 70-2008 and any applicable local, state, and federal codes.

The electrical circuit must be installed by an electrical contractor and approved by a local building or electrical inspector.

Failure to comply with state and local codes may result in fire or personal injury and will be the sole responsibility of the spa owner.

GFCI and Wiring Requirements

The power supplied to the spa must be on a dedicated GFCI protected circuit as required by ANSI/NFPA 70 with no other appliances or lights sharing the power.

Use copper wire with THHN insulation. Do not use aluminum wire.

Use the table on the next page to determine your GFCI and wiring requirements.

When NEC requires the use of wires larger than #6 AWG, install a junction box near the spa and use #6 AWG wire between the junction box and the spa.

Wire runs over 85 feet must increase wire gauge to the next lower number. For example: A normal 50 amp GFCI with four #8 AWG Copper wires run over 85 feet would require you to go to four #6 AWG copper wires.

Read and follow the heater manufacturer's safety and installation instructions prior to installation and operation. Incorrect installation may damage the heater and void its warranty.

Testing the GFCI Breaker

Test the GFCI breaker prior to first use and periodically when the spa is powered. To test the GFCI breaker follow these instructions (spa should be operating):

1. Press the TEST button on the GFCI. The GFCI will trip and the spa will shut off.
2. Reset the GFCI breaker by switching the breaker to the full OFF position, wait a moment, then turn the breaker back on. The spa should have power again.

240V GFCI and Wiring Requirements

All 5100DV and 6200DV control systems are set at the factory to run on the low power setting for 40 amp operation. This is the default setting. Spa owners can have their installer change this setting so the spa will run on high power for 50 amp operation.

Warning: Never set a spa to run on high power without installing a properly rated GFCI.

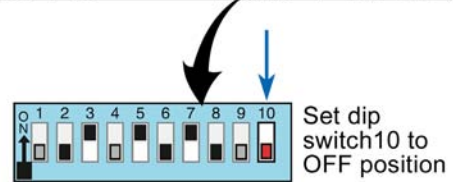
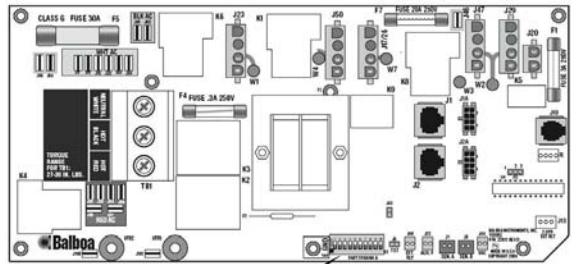
| | Spa Model | GFCI Required | Wires Required |
|---|--|-----------------|--------------------------|
| All Portable Spas (except Ultimate Fitness) | 5100DV and 6200DV systems, power saver mode This is the factory default setting. | One 40 amp GFCI | Four #8 AWG copper wires |
| | 5100DV and 6200DV systems, high power setting See configuration instructions on page 6. | One 50 amp GFCI | Four #8 AWG copper wires |
| | 9800 system (except Ultimate Fitness spas -- see below) | One 50 amp GFCI | Four #8 AWG copper wires |
| | 6300DV system, default high power setting See configuration instructions on page 6. | One 60 amp GFCI | Four #8 AWG copper wires |

| | Spa Model | | GFCI Required | Wires Required | GFCI Required | Wires Required |
|-----------------------|--------------------------------------|-----------------------|--|---------------------------|--|---------------------------|
| | | | Standard configuration (5.5 kW heater) | | Configuration for Option 499 (11 kW heater) and Option 157 (swim jets with Speck pump) | |
| Ultimate Fitness Spas | F854 | | One 50 amp GFCI | Four #8 AWG copper wires | N/A | |
| | F1255 | Service 1 | One 50 amp GFCI | Four #8 AWG copper wires | One 60 amp GFCI | Four #8 AWG copper wires |
| | | Service 2 | One 30 amp GFCI | Three #8 AWG copper wires | One 30 amp GFCI | Three #8 AWG copper wires |
| | FP1455 FP1655 FP2400 FP2500 | Service 1 | One 50 amp GFCI | Four #8 AWG copper wires | One 60 amp GFCI | Four #8 AWG copper wires |
| | | Service 2 | One 50 amp GFCI | Four #8 AWG copper wires | One 30 amp GFCI | Three #8 AWG copper wires |
| | FP4700 | Service 1 (swim side) | One 50 amp GFCI | Four #8 AWG copper wires | One 60 amp GFCI | Four #8 AWG copper wires |
| | | Service 2 (swim side) | N/A | N/A | One 30 amp GFCI | Three #8 AWG copper wires |
| | | Service 3 (spa side) | One 40 amp GFCI | Four #8 AWG copper wires | One 40 amp GFCI | Four #8 AWG copper wires |

High Power Configuration for 5100DV and 6200DV Systems

To operate the spa in high power mode, ensure the following steps are performed before starting your spa:

- When installing the electrical system, use a 50 amp GFCI. Follow the GFCI wiring diagram on the next page.
- Have your dealer or installer set dip switch #10 to the OFF position on the circuit board as shown below.

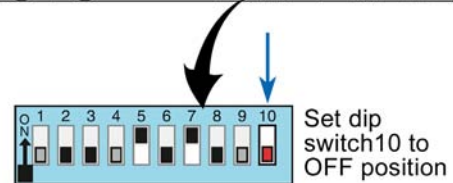
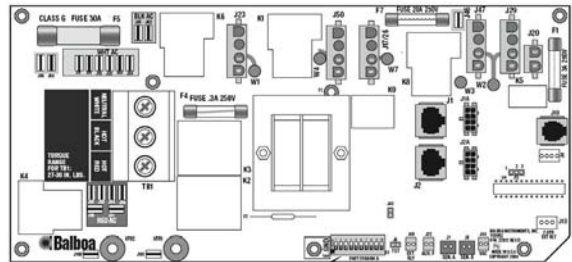


High Power Configuration for 6300DV System

The 6300DV control system requires higher power than other 240V systems. Dip switch #10 is factory set in the ON position. This causes the heater to shut off when any pump is running in high speed. To allow the heater to continue operating, dip switch #10 must be set to the OFF position.

To ensure your spa functions properly, ensure the following steps are performed before starting your spa:

- When installing the electrical system, use a 60 amp GFCI. Follow the GFCI wiring diagram on the next page.
- Have your dealer or installer set dip switch #10 to the OFF position on the circuit board as shown below.



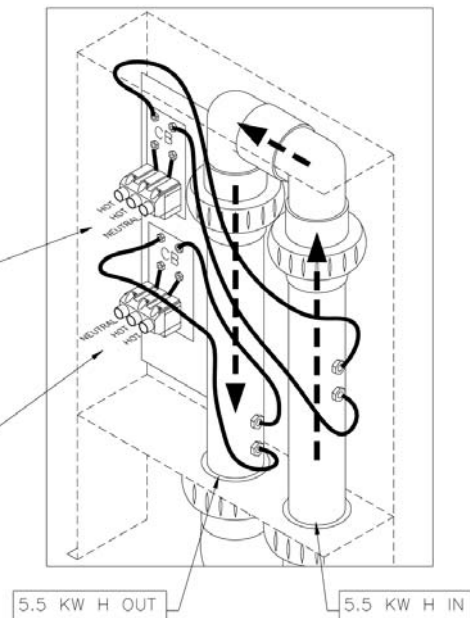
Electrical Installation for 11 kW Heater

This applies to Fitness spas with the 11 kW heater only.

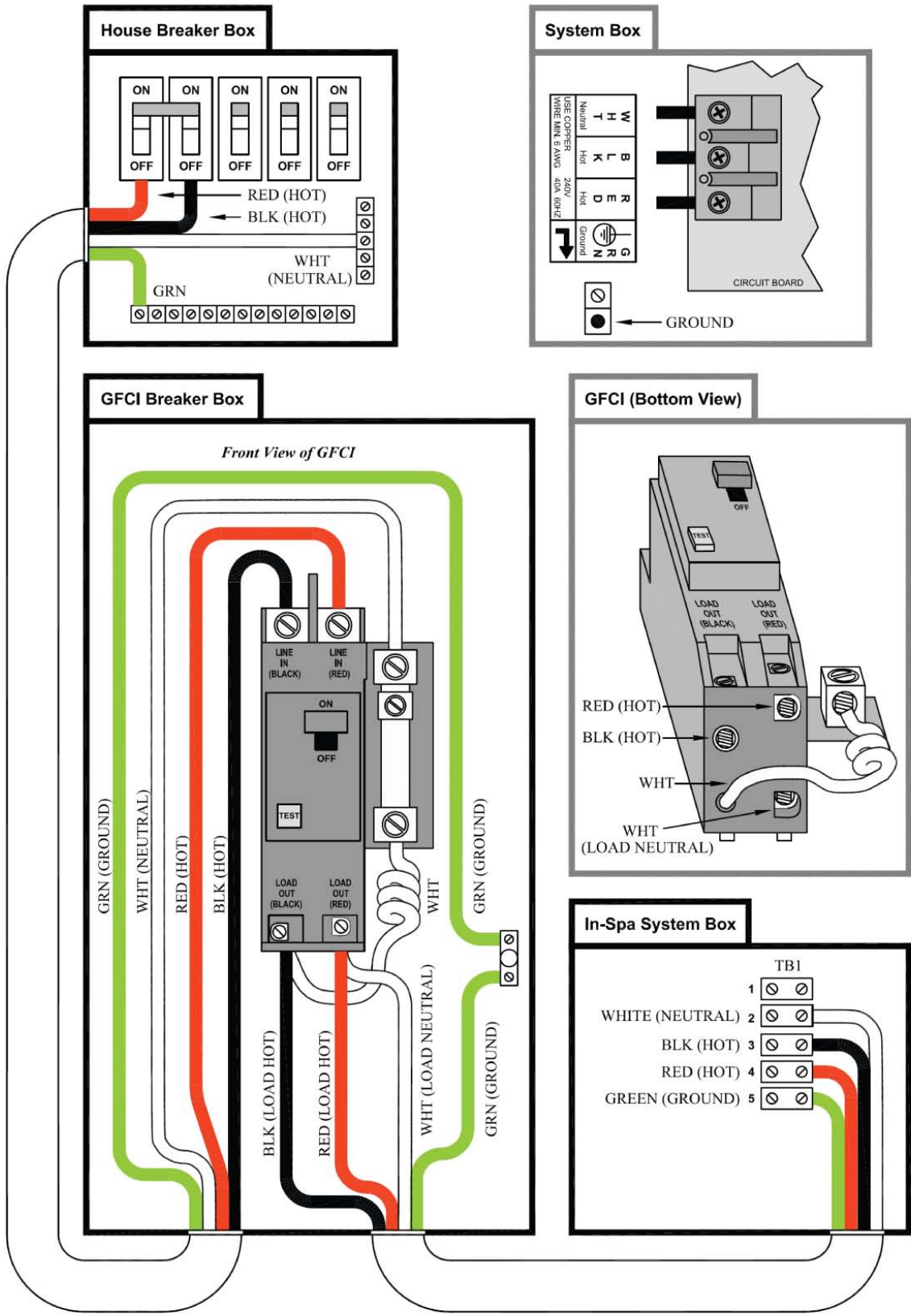
Two electrical services are required to heat the swim side of the Fitness Spa.

SOURCE #2
 INPUT POWER 30AMPS
 3 WIRES
 HOT, HOT, GROUND
 AWG #8

SOURCE #1
 INPUT POWER 60 AMPS
 4 WIRES
 HOT, HOT, NEUTRAL GROUND
 AWG #8



GFCI Wiring Diagram



Gas Heater Hook up

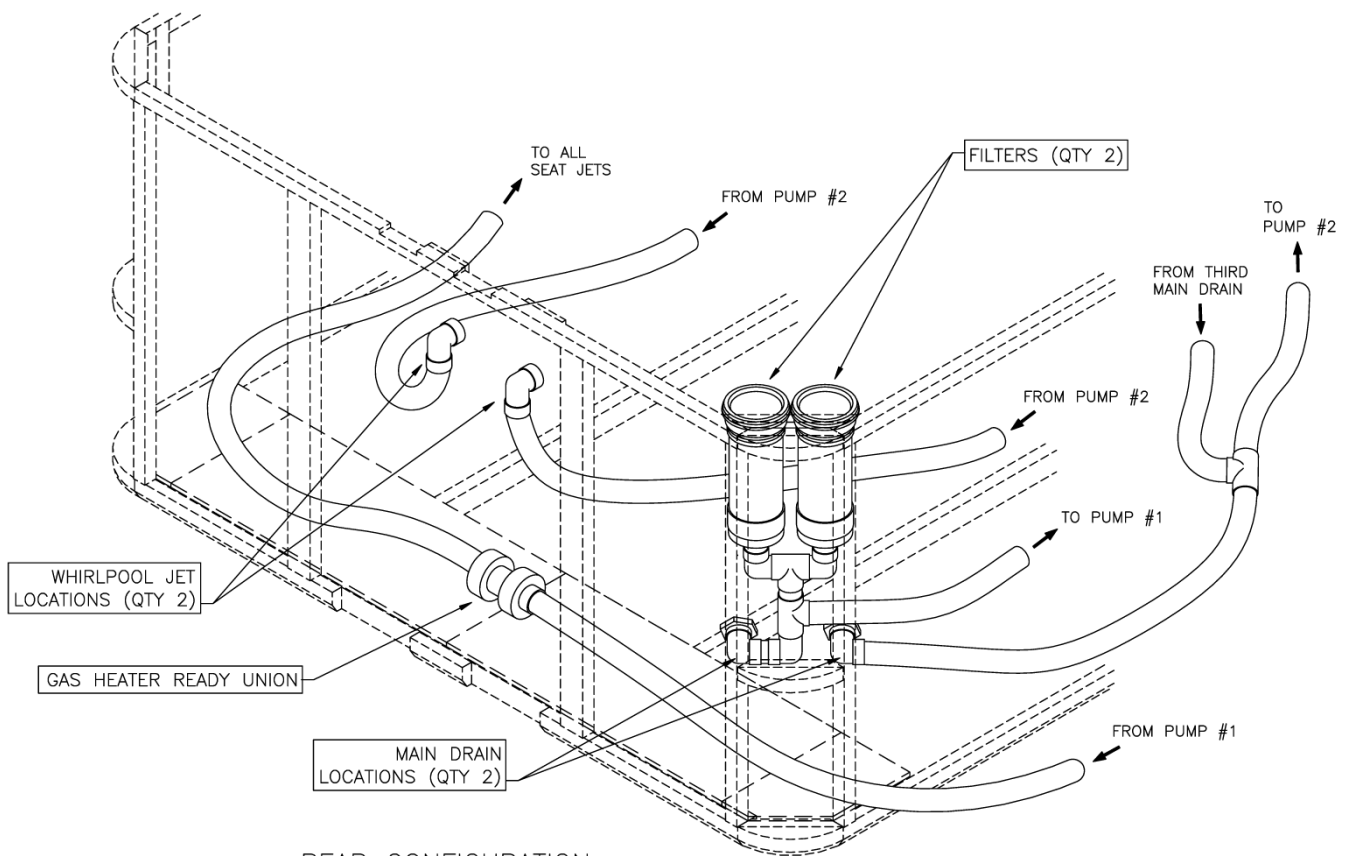
Ultimate Fitness Series spa owners may buy and install a separate gas heater and pump for use with their spa. This option may be purchased separately from your local distributor.

Spa owners are responsible for ensuring installation of their gas heater conforms to local, state, and federal regulations. The electrical and gas installation must be performed by contractors and approved by a local building / electrical inspector. Failure to do so may void your warranty.

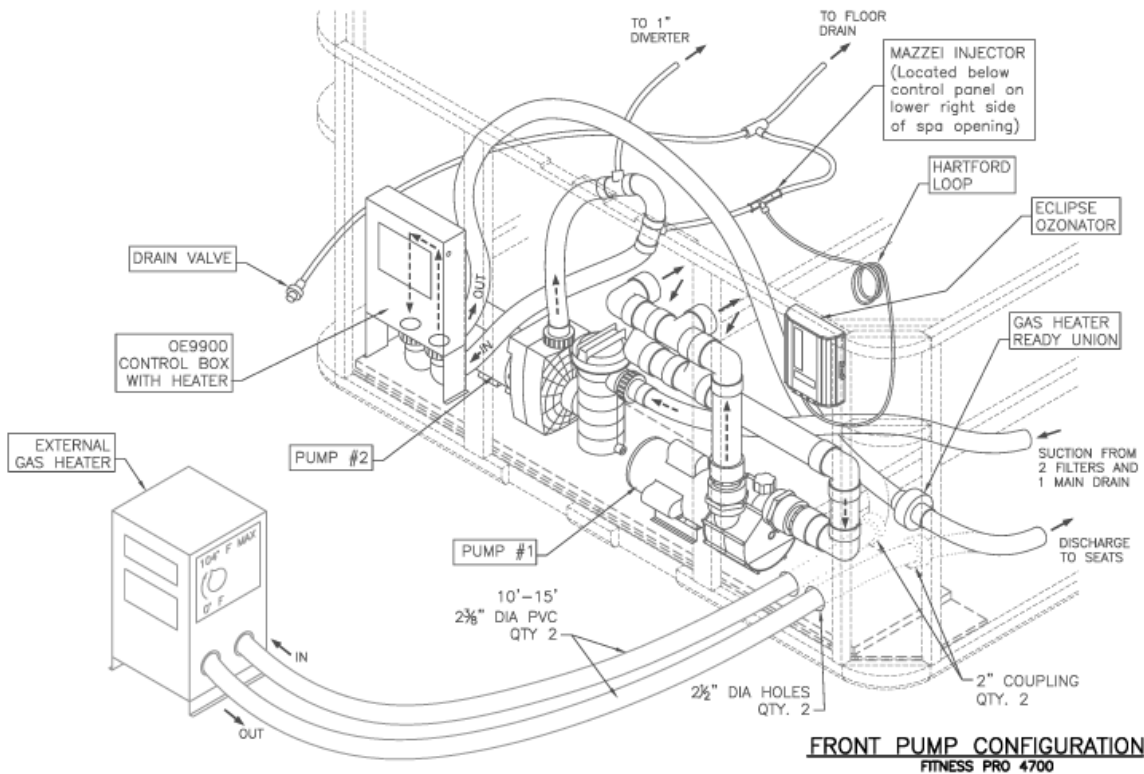
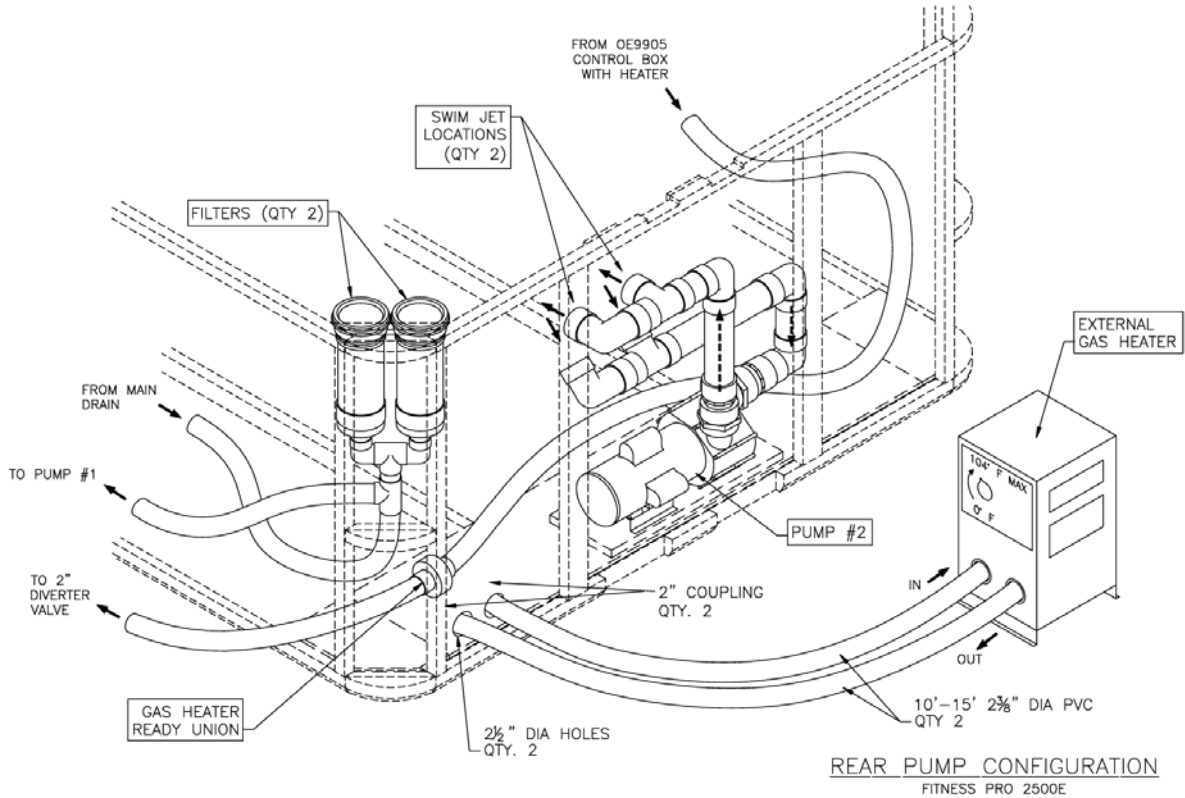
All Ultimate Fitness Series spas are plumbed with a gas heater ready union located inside the cabinet at either the front or rear, depending on the model. (See the figures below and at right.) Properly installed, they can be attached to an external gas heater. Customers are responsible for creating openings in the panel to accommodate the lines and wiring. The gas heater should be located not less than 10 feet and no more than 25 feet away from the spa.

To connect the plumbing for an external gas heater:

1. Disconnect the ready union.
2. Cut off both sides of the union and discard it.
3. Create two 2½" diameter holes through the spa panel.
4. Use two 2" couplings to connect the hoses to 10' - 15' 2-3/8" diameter PVC lines.
5. Connect PVC lines to the gas heater.



REAR CONFIGURATION
FITNESS 2400E



Filling and Powering Up Your Portable Spa



Never fill your spa with soft water.

Soft water makes it impossible to maintain the proper water chemistry and may cause the water to foam, which will ultimately harm the finish of the spa and void your warranty.

1. Once the spa has been placed on an approved surface and has been correctly wired by a licensed electrician, inspect all plumbing connections in the equipment area of your spa. Ensure that these connections are secure and that they did not loosen during shipment.
2. If equipped, open all gate valves in the equipment area. Before operating the spa, these valves must be in the up or "open" position.



VERY IMPORTANT!

Never run the spa with the gate valves closed or without water circulating for long periods of time. Be careful not to over-tighten the plumbing fittings.

3. Remove the cartridge from filter canister.
4. Place a garden hose in the filter canister and fill your spa with **regular tap water** about six inches from the top.



VERY IMPORTANT!

Always fill the spa through the filter canister! Failure to do so may cause air to be trapped in the filtration system and prevent the pumps from operating properly.

5. Presoak the filters in spa water.



VERY IMPORTANT!

You must presoak the filters before inserting them in the filter canister. Dry filters can allow air into the filtration system which can cause pump failure.

6. (For owners of the automatic bromine generator) Make sure the dial on the face of the bromine generator unit is turned to the OFF position.
7. Once the water is at the correct level and air is bled, turn on the power at the GFCI breaker. (Ensure that the 120V spas are connected to the proper electrical outlet.)

Note: Depending on the model, when the power is turned on to the spa, the controls will perform a diagnostic check for approximately five minutes. When the diagnostic is complete, the spa will automatically operate at filter speed and continue heating until the spa water temperature reaches the default temperature of 100°F.

8. If no water is flowing when the pump is running, there could be an air pocket at the suction side of the pump. Shut off power to the spa and loosen the pump union on the suction side of the pump to bleed the air. When air is bled, turn power back on.
9. Install the pre-soaked filters into the filter canister.

The spa is now ready for use.

Priming the Pump

New spa owners often have difficulty the first time they start their spa and the pump fails to prime. This can be frustrating, but these simple instructions can help you.

Sometimes air can become trapped in the pump while filling the spa. You will know this has happened when after you have filled and started the spa, the pump does not seem to function. You will hear the pump operating, but no water will be moving.

There are two methods of priming the pump.

The first method will remove small air bubbles trapped in the pump.

1. Turn the spa on and wait for PR (Priming Mode) to appear on the topside display.
2. Press the JETS1 button to turn on the pump and let it run for 10 seconds. The pump should be running in low speed.
3. Press the JETS1 buttons again and let the pump run in high speed for 10 seconds.
4. Press the JETS1 button again to turn off the pump. The pump should be left in the off position for 10 to 15 seconds.
5. Repeat steps 1 through 4 until water is flowing through all the jets and all air is removed from the plumbing.

The second method will remove a large air lock within the pump.

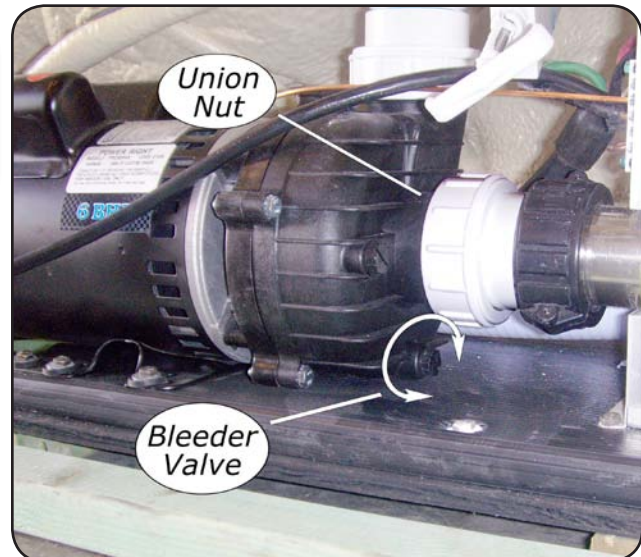
1. Using a Phillips screwdriver, remove the front panel from the spa and locate the pump.
2. While the spa is operating, turn the bleeder valve counter clockwise with a small pair of pliers or a flat head screwdriver until the air has been released from the pump.
3. If this is unsuccessful, loosen the white union nut on side of the pump with channel locks. When air is bled out, tighten the nut and set the pump on high speed.



The pump will not work properly while air is trapped in it. Continuing to operate the pump in this way will cause damage.

Whenever you fill your spa, fill it through the filter canister and make sure all jets are open.

Note: If you press the **Temp** button any time during Priming Mode, it will exit that mode and begin Standard Mode.



Operating Your Spa

VL406, 6200, and 6300 Electronic Control Operation

These instructions will describe features and options that your particular spa may not be equipped with.



VL406U
(one pump system)



VL406T
(two pump system)



6200 and 6300 control panel

Initial Start up

When first powered up, your spa will perform a self-diagnostic check and go into priming mode. When the control panel displays **PR**, IMMEDIATELY do the following:

1. Press the JETS button to turn on the pump and let it run for 10 seconds. The pump should be running in low speed.
2. Press the JETS buttons again and let the pump run in high speed for 10 seconds.
3. Press the JETS button again to turn off the pump. The pump should be left in the off position for 10 to 15 seconds.
4. Repeat steps 1 through 3 until water is flowing through all the jets and all air is removed from the plumbing.

When the spa has finished priming, the heater will be activated and the water temperature will be maintained in standard mode. The spa will heat to 100°F (37.5°C) at start up until the set temperature is changed as described below.

Temperature Adjustment

(Range 80°F to 104°F, 26°C to 40°C)

The electronic control panel displays the actual water temperature in degrees Fahrenheit. The displayed temperature will only be current after the pump has been running for at least two minutes.

To display the temperature that the spa is set to:

- Press the **Temp** button. The temperature setting will flash.
- While the display is flashing, each time you press **Temp** button, the set temperature will change up or down one degree.
- If the desired temperature is opposite of the direction each press of the button is making, release button, allow display to stop flashing and then press **Temp** button to change temperature the other direction.

Standard, Economy and Sleep Heating Modes

Your new spa is equipped with a heating feature that gives you complete control of the heating system. When the spa is powered up, it will automatically start in standard heating mode.

- **St** will light briefly on the main display. In this mode, the heating system will automatically maintain the set spa temperature. In the economy-heating mode, the heating system will only activate during filtration times.
- **Ec** will display solid if temperature is not current and will alternate with spa temperature if measured temperature is current.
- Economy mode will heat the water to the set temperature while Sleep mode, indicated by a **SL** on the main display, will also only activate the heater during the filtering cycles but will only heat the water to within 20°F (10°C) of the set temperature. Like Economy mode, **SL** will display solid when temperature is not current and will alternate with actual temperature when it is current.

NOTE: Displayed temperature will only be current after the pump has been running for at least two minutes.

Switching Modes

- Press **Temp** button followed by the **Light** button.
- Press the same sequence to switch to the next mode.

Jets

Press the **Jets** button:

- Once to activate low speed pump.
- Twice to activate high speed.
- Three times to turn pump off.

Light

Press the **Light** button to turn on the light. Press it once again to turn the light off. All optional lighting such as the control panel light and cabinet perimeter lighting is controlled by the **Light** button and will turn on and off with the spa light.

Option

Press the **Option** button to turn on the pump 2. Press it once again to turn off the pump 2 (6200 control only).

6300 Control - Pump 2 and Pump 3 Sequence

- Press **Option** button once to activate high speed pump 2.
- Press **Option** button twice to activate high speed pump 3 and high speed pump 2.
- Press three times to activate pump 3 high speed only.
- Press four times to turn pumps off.

“Green Pack” Operation

Spas with the “Green Pack” option require approximately 20% less power to operate. Once the spa is properly installed, it does not require any special operation. This is for your information only.

When JETS 1 is pressed, the heater will operate at 220V. When JETS 2 or OPTION is pressed (depending on which control panel you have), the heater will automatically switch to operate at 110V.

With the “Green Pack”, your spa will never use more than 30 amps while in operation.

Automatic Time outs

These features will automatically turn themselves off during periods of continuous use:

- Low speed pump After 4 hours
- High speed pumps After 15 minutes
- Optional circulation pump After 15 minutes
- Optional turbo After 15 minutes
- Spa light After 4 hours

Setting Filtration Cycles

Your spa is programmed to filter twice a day. The first cycle will begin 6 minutes after the spa is turned on and the second cycle 12 hours later. The factory has programmed the cycle to last for 2 hours but this can be switched to 4, 6, or 8 hours depending on your requirements. To set filtration time, turn off the power to the spa at the time of day you would like one of the filtration cycles to begin then turn back on after 30 seconds. When power has been restored, press the **Temp** button then the **Jets** button. Press **Temp** button again to change the filtering cycle duration. When desired duration is selected press the **Jets** button to exit.

At the beginning of each filtering cycle the Turbo system will run for approximately 30 seconds. The low speed pump will run for the duration of the filtering cycle and if an Ozone system is installed it will be activated. During filtering, **FC** will appear on the main display.

9800 Electronic Control Operation

These instructions will describe features and options that your particular spa may not be equipped with.



Initial Start up

When first powered up, your spa will perform a self-diagnostic check and go into priming mode. When the control panel displays **PR**, IMMEDIATELY do the following:

1. Press the JETS 1 button to turn on the pump and let it run for 10 seconds. The pump should be running in low speed.
2. Press the JETS 1 buttons again and let the pump run in high speed for 10 seconds.
3. Press the JETS 1 button again to turn off the pump. The pump should be left in the off position for 10 to 15 seconds.
4. Repeat steps 1 through 3 until water is flowing through all the jets and all air is removed from the plumbing.

When the spa has finished priming, the heater will be activated and the water temperature will be maintained in standard mode. The spa will heat to 100°F (37.5°C) at start up until the set temperature is changed as described below.

Temperature Adjustment

(Range 80°F to 104°F, 26°C to 40°C)

The start-up temperature is set at 100°F (37.5°C). The last measured temperature is constantly displayed on the control panel. Note that the last measured spa temperature is displayed. The displayed temperature

will be updated when the pump has been running for at least two minutes.

Press the "UP" or "DOWN" buttons once to display the set temperature. Each time either button is pressed again, the set temperature will increase or decrease depending on which button is pressed. After three seconds, the control panel will automatically display the last measured spa temperature.

Time

When time hasn't been programmed, the "TIME" icon flashes. To set the time, press the "TIME" button and then the "MODE/PROG" button. Use the "UP" and "DOWN" buttons to adjust time. See the next page for more detailed instructions.

Standard, Economy, Sleep, and Standby Modes

Mode/Prog: This button is used to switch between standard, economy, and sleep modes.

1. Press "MODE/PROG" to enter mode programming.
2. Press the "DOWN" button to cycle through to the desired mode.
3. Press "MODE/PROG" to confirm selection.

Standard Mode: This is programmed to maintain the desired temperature. Note that the last measured spa temperature displayed is current only when the

pump has been running for at least two minutes. The "STAND" icon will display until the mode is changed.

Economy Mode: Economy mode heats the spa to the set temperature only during filter cycles. The "ECON" icon will display until the mode is changed. Pressing the "JETS 1" button while in economy mode puts the spa in standard-in-economy mode, which operates the same as standard mode but reverts back to economy mode automatically after one hour. During this time, pressing the "MODE/PROG" button will revert to economy mode immediately.

Sleep Mode: Sleep mode heats the spa to within 20°F (11°C) of the set temperature only during filter cycles. The "SLEEP" icon will display until the mode is changed.

Standby Mode: Pressing "Warm" or "Cool" then "JETS 2" will turn off all spa functions temporarily. This is helpful when changing a filter. Pressing any button resets the spa.

Jets 1

Press the "JETS 1" button once to turn pump 1 on or off and to shift between low and high speeds if equipped. If left running, the low speed turns off after two hours and the high speed turns off after 15 minutes. On non-circulation systems, the low speed of pump 1 runs when the blower or any other pump is on. It may also activate for at least two minutes every 30 minutes to detect the spa temperature and then to heat to the set temperature if needed, depending upon the mode. When the low speed turns on automatically, it cannot be deactivated from the panel; however, the high speed may be started.

Jets 2

Press the "JETS 2" button once to turn pump 2 on or off and to shift between low and high speeds if it is a two-speed pump. If left running, the pump will turn off after 15 minutes.

Option

This is an optional feature. Press the "OPTION" button to turn the optional equipment on and off. If left on, the equipment will automatically turn off after 15 minutes.

Light

Press the "LIGHT" button to turn the spa light on and off and to shift between dim and bright settings if your light is dimmable. On dim, the control panel will show the center circle plus one quarter of the light beams. Half of the light beams will show on medium

brightness, and all of the light beams will show on bright.

Invert

Press the "INVERT" button to change the numbers in the display to read upside down. Another press returns the display to the right-side-up position. This enables you to read the display while you are in the spa.

Locking the Panel

To lock the panel:

- Press "TIME", "JETS 1", and the "UP" button within three seconds. When locked, the panel will display "LOCK". All buttons are frozen except the "TIME" button.

To unlock the panel:

- Press "TIME", "JETS 1" then the "DOWN" button within three seconds.

Setting the Temperature Lock

To activate the temperature lock:

- Press the "UP" or "DOWN" button, "TIME", "JETS 1", then the "UP" button within three seconds. The panel will display "TEMP LOCK" when the set temperature is locked.

To unlock the set temperature:

- Press the "UP" or "DOWN" button, "TIME", "JETS 1", and then the "DOWN" button.

Circulation Pump

This is an optional feature. The circulation pump will come on when the system is checking temperature, during filter cycles, during freeze conditions, or when another pump is on.

Preset Filter Cycles

There are two filter cycles per day. The start and end times of each cycle are programmable. To program, set the time as instructed above, then press "MODE/PROG" to advance to the next setting (or to exit after the last setting). The default filter cycles are as follows:

- The first filter cycle is automatically activated at 8:00 AM and operates the pump until 10:00 AM. The "FILTER 1" indicator icon will light when filter 1 is running.
- The second filter cycle is automatically activated at 8:00 PM and operates the pump until 10:00 PM. The "FILTER 2" indicator icon will light when filter 2 is running.

The pump and the ozone generator will run during filtration. At the start of each filter cycle, the blower will run on highest speed for 30 seconds to clean out the air channels. The lowest speed of pump 2 and pump 3 will run for five minutes. In the event of power loss or shut down, the time of day will need to be reset for filter cycles to run according to your desired programming.

Clean up Cycle

When the pump or blower is turned on by a button press, a clean-up cycle begins 30 minutes after the pump or blower is turned off or times out. The pump and the ozone generator will run for one hour.

Ozone

This is an optional feature. On most systems, the ozone generator (if installed) runs during filter cycles (except when pump 1 is operating at high speed on a non-circ-

ulating system) and during clean-up cycles. On some systems, the ozone generator operates whenever the pump runs. If your system is configured with the optional ozone disable feature, the ozone generator will turn off for one hour any time a function button ("JETS 1", "JETS 2", "OPTION" etc.) is pressed.

Freeze Protection

If the temperature sensors detect a drop to 44°F within the heater, the pump automatically activates to provide freeze protection. The equipment stays on until four minutes after the sensors detect that the spa temperature has risen to 45°F or higher. In colder climates, an optional additional freeze sensor may be added to protect against freeze conditions that may not be sensed by the standard sensors. Auxiliary freeze sensor protection acts similarly except with the temperature thresholds determined by the switch and without a four-minute delay in turnoff.



“Sounds Good” System Operation

The “Sounds Good” system is available on 9800 controls only.

When you press the button once, it activates the sound system. You will hear a unique sound for each button you press on the control panel.

The “Sounds Good” system plays sounds in three modes and will cycle in this order each time you press the button on the SOUNDS GOOD panel:



- Once All sounds play at full volume
- Twice All sounds play at half volume
- Three times One sound plays for all controls
- Four times All sounds are off

Auxiliary Control Panels

Standard configuration (9800)

Jets 1
Light Jets 2
Option



Spa Models with 3-pump system (9800)

Jets 1
Jets 3 Jets 2
Option



Air blower control (9800)



Two button jets control (6200/6300)



Periodic Reminder Messages

Press the "Mode" button to reset a displayed reminder.

| Message | Frequency | Action Required |
|---------|----------------|--|
| rPH | Every 7 days | Test and adjust chemical levels per manufacturer's instructions. |
| rSA | Every 7 days | Test and adjust chemical levels per manufacturer's instructions. |
| rCL | Every 30 days | Remove, clean, and reinstall filter per manufacturer's instructions. |
| rtg | Every 30 days | Test and reset GFCI per manufacturer's instructions. Drain and refill spa per manufacturer's instructions. |
| rdr | Every 90 days | Drain and refill spa per manufacturer's instructions. |
| rCO | Every 180 days | Clean and condition spa cover. |
| rCH | Every 365 days | Install a new filter. |

Diagnostic Messages

| Message | Meaning | Action Required |
|------------------------------|--|--|
| No message on display | 1) Spa temperature is unknown. 2) Spa is in Economy or Sleep mode. 3) Power has been cut off to the spa. | 1) After pump has been running for 2 minutes temperature will be displayed. 2) In Economy or Sleep mode, the pump may be off for hours outside a filter cycle. If you wish to see the current spa temperature, either switch to Standard mode or turn Jets1 on for at least two minutes. 3) The control panel will be disabled until power returns. Spa settings and time of day will be preserved for 30 days with a battery back-up. |
| BUF | Internal problem detected. | Repair required. Contact your dealer or service organization. |
| dr | Insufficient water detected in heater. Spa will be shut down for 15 minutes. | Check water level in spa. Refill if necessary. Make sure pumps are primed and filter cartridges are clean. Press any button to reset or wait 15 minutes and spa will automatically reset. If message spa does not reset, call your dealer or service organization. |
| dry dY | Insufficient water detected in heater. Spa is shut down. (Displays on third occurrence of dr message.) | Follow directions for dr message and press any button to reset spa. Spa will not automatically reset when dry or dY is displayed. |
| Ec | Indicates heater is in Economy Mode. | None. |
| --F or --C | Temperature unknown | After the pump has been running for two minutes, the temperature will be displayed. |
| HL HFL | A difference in readings between temperature sensors has been detected indicating a possible water flow problem. | Make sure spa is filled to proper level and that pumps are primed and filter cartridges are clean. If message does not reset, call your dealer or service organization. |
| IC ICE | Potential freeze condition detected. | No action required. The pumps and the blower will automatically activate regardless of spa status. |

| Message | Meaning | Action Required |
|----------------------------------|---|--|
| LF | Persistent low flow problems. Heater is shut down, but other spa functions continue to run normally. Displays on the fifth occurrence of the HL or HFL message within 24 hours. | Follow action required for HL or HFL message. Heating capacity of the spa will not reset automatically. Press any button to reset. |
| OH OHS | Overheat protection. The spa has shut down. One of the sensors has detected that the spa water is 110°F. | DO NOT ENTER THE WATER. Remove the spa cover and allow water to cool. At 107°F, the spa should automatically reset. If spa does not reset, shut off the power to the spa and call your dealer or service organization. |
| HH OHH | Overheat protection (spa is shutdown). One sensor has detected 118°F (48°C) at the heater. | DO NOT ENTER THE WATER! Remove the spa cover and allow spa to cool below 107°F (42°C). Press any button on the topside display to reset spa. If spa will not reset after spa has cooled, turn off power for approximately 30 seconds and then turn power back on. If display message is repeated then shut the power off to the spa and call your dealer or service organization. |
| Pr | When your spa is first actuated, it will go into priming mode. | The priming mode will last for up to four minutes and then the spa will begin to heat and maintain the water temperature in the Standard mode. |
| SF | Safety Suction. Spa is shut down. | The display will show SF when a vacuum switch closes. All functions will turn off and the system will be disabled until a panel button is pressed. |
| SL | Indicates heater is in Sleep Mode. | None. |
| SA Sb SNA Snb | Spa is shut down. The sensor that is plugged into the sensor "A" or "B" jack is not working. | If the problem persists, contact your dealer or service organization. (May appear temporarily in an overheat situation and disappear when the heater cools.) |
| Sns Sn | Sensors are out of balance. <ul style="list-style-type: none"> If this is alternating with the temperature, it may just be a temporary condition. If the display shows only this message (periodically blinking), the spa is shut down. | Contact your dealer or service organization. |
| ST | Indicates heater is in Standard Mode. | None. |
| Stby | Pressing a button combination on the user panel has activated Standby Mode. | Press any button to leave Standby Mode and return to normal operation. |

Electrical Power Efficiency

Your new spa comes equipped with an electric heater. Following the directions listed below will ensure the most efficient operation:

NOTE: This method is only for spa usage under two hours a week.

- Keep the spa's operating temperature 5°F below the desired usage temperature when not in use. One or two hours before use, set the temperature to the desired temperature.
- If the spa usage exceeds two hours a week, the set temperature should remain at the desired usage temperature.
- The air venturis should be used sparingly. When open, water temperature drops quite rapidly and can also dissipate chemicals.

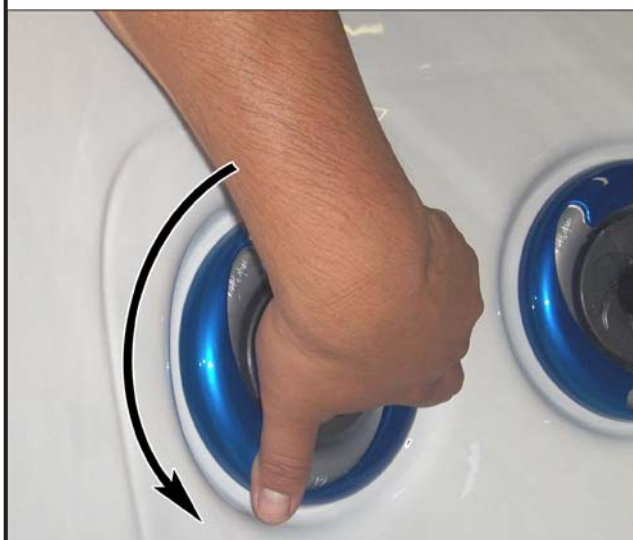
Allowing the water temperature to lower more than 10°F below the desired usage temperature and reheating it prior to usage will cause the heater to operate longer than it normally would maintaining the desired temperature. Doing this will increase your operating cost and makes your heater work more than necessary.



Jets

Almost all of the jets in your spa are adjustable. Rotating the face of an adjustable jet to the left (counter-clockwise) will decrease the amount of water flow through the jet. Rotating the face of an adjustable jet to the right (clockwise) will increase the amount of water flow through the jet. (See example shown below.)

Neck jets adjust in the opposite directions (counter-clockwise to increase, clockwise to decrease).



Diverter Knobs

Diverter knobs are 1" and 2" knobs located around the top of your spa. They allow you to divert water through jets from one side of the spa to the other, or in most cases from floor jets to wall jets. This is accomplished by rotating the diverter knob to the left (counterclockwise), decreasing the amount of water flow through a section of jets.

To increase the amount of water flow through the other section of jets, rotate the handle to the right (clockwise).



Waterfalls

Some spa series include optional waterfalls. When the booster pump is on, turn the knob near the waterfall, or rotate the dial on top of the waterfall. Water will immediately start flowing through it.

Air Venturis

Air venturis are the 1" knobs located around the top of your spa. Each one will let you add a mixture of air with the jet pressure. This is accomplished by rotating the air venturi knob to the left (counterclockwise) to increase the amount of airflow through the jets. To decrease the amount of airflow through the jets, rotate the handle to the right (clockwise).



Adjustable Therapy System

Pump On/Off

This button allows the user to turn on and off the ATS seat pump. Press this button once to turn the pump on. Once on, the green LED light on the control panel will illuminate, indicating that the system is operational. To turn off the pump, press the "PUMP ON/OFF" button a second time. Note: The pump must be on prior to operating any other features of this system.

Pulse Mode

This button allows the user to turn the ATS massage control on and off. Press the pulse button once to turn on the massage control. Once pressed, the orange LED in position number 1 will light, indicating the number one pulse mode. Each press of either the up or down button will move the orange LED up or down to the next pulse mode.

Note: Allow one second between each button press. Pressing the button quickly may cause improper operation. To turn the pulse mode off and return to normal pump operation, press the "PULSE MODE" button a second time.

Up

This button allows the user to cycle up from one through seven massage modes one at a time. Each mode offers a different pulsating massage. Some modes are faster than others, so just cycle through them to find the massage you like best.

Down

This button allows the user to cycle down through all seven massage modes, one at a time.

Time Reset Mode

Pulse mode will normally run for 15 minutes then automatically shut off. For another 15-minute session, press the "PUMP ON/OFF" button and the "PULSE MODE" button. A

green LED will blink and the pump will run on high-speed mode as part of a 15-minute cool down period. After that, the pump will stop automatically and the green LED light on the panel will continue to blink for one minute then shut off automatically. After the second 15-minute session, the system will run through a cool down cycle for up to two hours. In this cool down mode, the user will only be able to operate the pump (by again pressing the "PUMP ON/OFF" button). However, the massage mode will remain off until the cool down mode is completed.

Pulse Mode System

Pulse mode system will shut off for two hours unless reset by the following procedure. During this time the pump will run at a maximum speed.

- In the off position, press the "PULSE MODE" button once.
- The green power light will flash to indicate reset.



Wireless Spa Monitor

The wireless spa monitor allows you to monitor and change your spa's activity from a distance. The table below describes each button's function.

| | |
|--------------|---|
| Light | Operates spa light and LED mood lighting |
| Temp | Display or adjust the set temperature control |
| Jet 1 | Turn on or off jet 1 |
| Mode | Switch between Standard, Economy, and Sleep Modes |



LED Perimeter Lighting

Press the LIGHT button on the topside control panel to turn the spa light on. If your spa has perimeter LED lights, they will also light up at the same time as the spa light.

The perimeter lights operate in three modes:

- 1. **Cycle:** The first time you press the LIGHT button, the lights will cycle through all the colors in this order:

- White
- Cyan
- Magenta
- Blue
- Yellow/green
- Green
- Red

To cycle through the different color choices, press the button repeatedly. Each time you press the button, you advance to the next color.

- 2. **Flashing white:** When you have cycled through all the colors, the next time you push the LIGHT button, the LED lights will flash white.
- 3. **Fading cycle:** The next time you push the LIGHT button, the lights will gradually fade from one color to the next in the order shown above.

Spas with exterior corner LED lighting work in the same modes as described above but do not light up when the interior perimeter lights are yellow/green, green or red.



Clear Water Plan

This section is intended for new spa owners with no experience with water chemistry. Everyone's experience with maintaining water quality is different, but there are some general concepts you need to know.

Water maintenance is not difficult, although it requires regular attention. The most important thing to understand about taking care of your spa water is that preventive action is much easier than correcting water quality issues.

The Key to Clear Water

Excellent water quality is a simple matter of four things:

Regularity

Clear water requires regular maintenance. Establish a routine based on a regular schedule for your spa water maintenance.

Maintaining your water quality helps the enjoyment of your spa and extends your spa's life by preventing damage from neglect and chemical abuse.

See page 30 for the schedule of recommended maintenance.

Sanitation

Sanitizers kill bacteria and viruses and keep the water clean. A low sanitizer level will allow microbes to grow quickly in the spa water.

We recommend using either chlorine or bromine as your sanitizer.

Spa owners with an ozonator or a Cal Clarity bromine generator also need to add sanitizer, although their requirements are different.

See page 26 for learn how to use sanitizer.

Contents of this section:

- Testing and Adjusting Spa Water
- Sanitation
- Filtration
- Bather Load
- Starting the Spa with Fresh Water
- Maintenance Schedule
- Ozonator
- Cal Clarity Bromine Generator
- Troubleshooting Water Clarity Problems

Filtration

Cleaning your filter regularly is the easiest and most effective single thing you can do to keep your water clear.

A clogged or dirty filter will cause the heater and pump to work harder than they need to, possibly causing them to fail.

The spa's heating system will only function with the proper amount of water flow through the system.

See page 28 for filter cleaning instructions.

Chemical Balance

You will need to test and adjust the chemical balance of your spa water. Although this is not difficult, it needs to be done regularly.

Depending on your choice of sanitizer, you need to test the level of calcium hardness, total alkalinity, and pH. Spa owners with a Cal Clarity bromine generator also need to check total dissolved solids and phosphates.

See page 26 for learn how to balance your spa water.



Testing and Adjusting Spa Water

You have two types of testing methods to choose from:

- The **reagent test kit** is a method which provides a high level of accuracy. It is available in either liquid or tablet form.
- **Test strips** are a convenient testing method commonly used by spa owners.

Balancing the Total Alkalinity

Total alkalinity (TA) is the measure of the total levels of carbonates, bicarbonates, hydroxides, and other alkaline substances in the water. TA can be considered a "pH buffer". It is the measure of the ability of the water to resist changes in pH level.

The recommended total alkalinity is 80 - 120 ppm.

If the TA is too low, the pH level will fluctuate widely from high to low. Low TA can be corrected by adding Cal Spas "pH-Alkalinity Up".

If the TA is too high, the pH level will tend to be too high and may be difficult to bring down. High TA can be corrected by adding Cal Spas "pH-Alkalinity Down".

When the TA is balanced, it normally remains stable, although adding water with high or low alkalinity will raise or lower the TA level.

Balancing the Calcium Hardness

Calcium hardness (CH) is a measure of the total amount of dissolved calcium in the water. Calcium helps control the corrosive nature of the spa's water and is why soft water is not recommended. The low calcium content of soft water is very corrosive to the equipment and can cause staining of the spa shell.

The recommended calcium hardness is 150 - 200 ppm.

If the CH is too low, add Cal Spas "Liquid Hardness Increaser".

If the CH is too high, dilute the spa water with soft water or, if this is not available, add Cal Spas "Stain and Scale Defense".

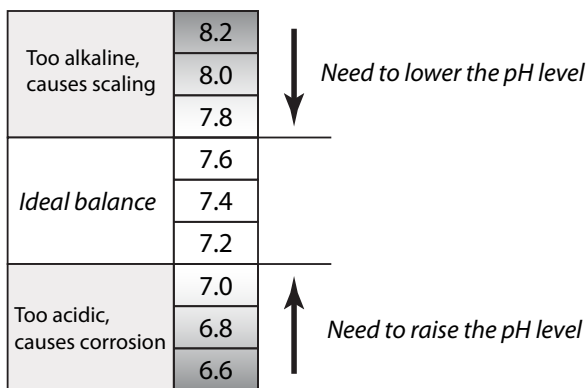
When the CH is balanced, it normally remains stable, although adding soft water or very hard water will raise or lower the CH level.

Balancing the pH

The pH level is the measure of the balance between acidity and alkalinity.

If the pH is too low, it can cause corrosion of metal fixtures and the heating element. Low pH can be corrected by adding pH-Alkalinity Up.

If the pH is too high, it can cause scaling by allowing metals or minerals to form deposits and stain spa surfaces. High pH can be corrected by adding pH-Alkalinity Down.



| Testing For: | Ideal Range (ppm) | | Chemicals To Use: | |
|------------------|-------------------|---------|---------------------------|-------------------------|
| | Minimum | Maximum | To Raise | To Lower |
| Total Alkalinity | 80 | 120 | pH-Alkalinity Up | pH-Alkaliity Down |
| Calcium Hardness | 150 | 200 | Liquid Hardness Increaser | Stain and Scale Defense |
| pH | 7.4 | 7.6 | pH-Alkalinity Up | pH-Alkaliity Down |

Sanitation

After you fill your spa, you need to decide which chemical sanitizer you wish to use. Consult your Cal Spas dealer for the right decision with regards to your lifestyle and spa usage.

We recommend either **bromine** or **chlorine** as your sanitizer. Both work well when maintained regularly.



DO NOT use trichlor. Trichlor is very acidic and the hot temperature of the spa causes it to dissolve too quickly. It will cause damage to your spa and will void your warranty.

Sanitizers kill bacteria and other organic waste by breaking them down to non-harmful levels and are filtered out.

Make sure you follow all instructions and use only Cal Spas brand chemicals.

Whichever plan you decide on, follow it completely and don't take shortcuts. It will provide you with clean, safe, clear spa water with a minimum of effort. Spa owners with an ozonator or the Cal Clarity bromine generator still need to use a chemical sanitizer. See page 30 for instructions on usage.

Using Chlorine as a Sanitizer

If you choose to use chlorine as a sanitizer, only use granulated chlorine, not liquid chlorine. We recommend you use only Cal Spas "Chlorinating Granules".

Once a week, check the chlorine level using either a test strip or a reagent kit. See the table on the following page for the ideal range.

Add one or two tablespoons of Cal Spas "Chlorinating Granules" to the spa water weekly. Note that chlorine dissipation rate will be faster at higher water temperatures and slower at lower temperatures.

When you add chlorine, open all of the jets and run the spa at high speed with the cover open for at least 30 minutes.

Follow the maintenance schedule on page page 30.

Using Bromine as a Sanitizer

Bromine is a very effective sanitizer that produces low chemical odors. Unlike chlorine, it can break down bacteria and other impurities to a safe level with a low burn-out rate.

Bromine is available in both granulated and tablet form. Use granulated bromine to establish your bromine base. Use tablets to maintain it. The filter cartridge provided with your spa has an internal chamber for bromine tablets. Do not use a floater.

When you begin with fresh water, add 2 ounces of Cal Spas Go Brom. Open all of the jets and run the spa at high speed. This is your base bromine level as the tablets will take a while to dissolve.

Add two ounces of Oxidizer Shock. Open all of the jets and run on high speed with the cover half open for at least 30 minutes.

Place three or four bromine tablets in the chamber inside the filter cartridge as shown in the figure at right.

Follow the maintenance schedule on page page 30.

Adding Sanitizer Tablets to the Chemical Chamber



| Testing For: | Ideal Range (ppm) | | Chemicals To Use: | |
|--|-------------------|---------|-----------------------|----------|
| | Minimum | Maximum | To Raise | To Lower |
| Chlorine level | | | | |
| Without ozonator | 3.0 | 5.0 | Chlorinating Granules | |
| With ozonator | 2.0 | 4.0 | | |
| Bromine level | | | | |
| Without ozonator | 6.7 | 11.0 | Go Brom | |
| With ozonator | 5.7 | 10.0 | | |
| Note: The Cal Clarity bromine generator requires different water chemistry tests. See page 31 for instructions on its use. | | | | |

Shocking the Water

In addition to using a chemical sanitizer, you will periodically need to shock the water. Shocking the water helps remove burned-out chemicals, bacteria, and other organic material from your spa's water and improves your sanitizer's effectiveness.

Do not use chlorinating shock, which will damage your spa's jets and pump seals. The only shock you should use is Cal Spas Oxidizer Shock. It is an easy way to maintain either chlorine or bromine chemical plans.

For best results use the directions below.

Add one ounce of Cal Spas Oxidizer Shock:

- Once a week
- After heavy bather loads
- If water has a strong odor

Spa must be running with all of the jets on high for 30 minutes with the cover open. If necessary, repeat oxidizer shock in 30 minute intervals.



Chemical Safety

Read and follow all printed instructions listed on bottles and packages. Failure to follow chemical directions may result in serious injury, sickness, or even death.

Do not exceed chemical dosages as recommended in the Clear Water Plan or on chemical bottles and packages.

Never change chemical brands or types without completely draining, flushing and thoroughly cleaning the spa and cover first.

Never mix chemicals together.

Do not allow chemicals to come in contact with skin, eyes or clothing. Remove and wash clothing that

may have been exposed to chemical contact prior to wearing them again.

Inhaling or ingesting chemicals will cause serious injury, sickness, or even death.

Chemicals must be stored completely out of the reach of children in an area that is well vented, cool, and dry. Failure to provide a proper area for chemical storage may result in serious injury, sickness, fire explosion and even death. Do not store your chemicals inside the equipment area of your spa.

About the Pure XL Water Sanitizer

The Pure XL water sanitizer is an optional water purification system installed at the factory. It works 24 hours a day with the continuous filtration pump during normal operation of the spa. It eradicates germs in the water that are resistant to chlorine-based chemicals using high intensity UV light.

There are no settings to adjust and is virtually maintenance-free. Once a year the UV light needs to be replaced and the quartz sleeve needs to be cleaned.

This is not a user-serviceable item and maintenance must be performed by a spa technician. Have your service technician consult the manufacturer's instruction and service manual. (UV water purifier system is manufactured by Aqua Ultraviolet.)

Filter Cleaning

The filter is the part of your spa that removes the debris from the water and needs to be cleaned on a regular basis to maximize your spa's filtering performance and heating efficiency.

In addition to spraying off the filter weekly to remove surface debris, your filter should be deep cleaned periodically to dissolve scale and particles that get lodged deep within the filter fibers and impede the filtration process. Even if the filter looks clean, scale and particles can clog the fibers and prevent water from flowing through the filter resulting in the most common spa problem—no heat, caused by a dirty filter.

We recommend you clean your filter once a month and replace it once a year or as necessary.

1. Remove the filter by turning it counterclockwise, unscrewing the bottom threads, then pulling it up and out.
2. Place the dirty filter into a bucket of water deep enough to cover the filter. Add 8 oz of Cal Spas "Liquid Filter Cleaner" to the bucket of water.

Note: It is a good idea to keep a spare filter to use in the spa while the dirty filter is being deep cleaned. This way, you can rotate the filters and both will last longer.

3. Twist off the tablet tube and set it aside.
4. Soak the filter for a minimum of 24 hours.
5. Spray the filter with a water hose. Spray each pleat carefully.
6. Put fresh bromine in the tablet tube (if you use it as a sanitizer) and twist it back on top of the filter.
7. Reinstall the filter. Do not overtighten.

Bather Load

“Bather Load” is the term used to describe the number of people using a spa, combined with the length of usage, and the frequency of usage. All these factors have a great effect on the spa water. The higher the bather load, the more chemicals need to be added and a longer filtration time will be needed.

All versions of the Cal Spas Clear Water Plan are designed for spas with average bather load (3

to 4 people, 15 minutes of usage, three times a week at 100 degrees) If your bather load exceeds these guidelines, and you experience water quality problems, increase the amount of filtration first, (go to the next higher filtration number) then if water quality is still not adequate, consult the advice of your Cal Spas dealer for additional chemical or system recommendations. Be sure to give them your bather load information.

Starting the Spa with Fresh Water

This applies to all spa owners **EXCEPT** those with the Cal Clarity bromine generator. See instructions on page page 31 for bromine generator operating instructions and spa filling procedures.

We recommend you use Cal Spas chemicals only. Other brands of chemicals may have similar names and/or usage descriptions but due to manufacturing differences, use of other chemicals can increase the likelihood of under- or over-dosing the spa chemicals. Damage to the spa or spa’s components from improper chemicals or chemical usage is not covered under the spa’s warranty.

Prior to filling a spa for the first time, or after a routine draining, you will want to follow this start-up plan to extend water life and performance.

As with all chemical dosages listed in these Clear Water Plans, start-up dosages are intended for 500-gallon spas. Please adjust the chemical dosages to the capacity of your particular spa.

1. Clean the surface of the spa with Cal Spas “Multi-Purpose Cleaner”.
2. Apply a protective coat of Cal Spas “Fast Sheen” to the acrylic surface.

3. Fill the spa to the proper water level with normal tap water. (Do not use soft water.)
4. Use test strip and balance the spa water.
 - Adjust total alkalinity (acceptable range is 80-120ppm).
 - Adjust pH if necessary (between 7.2 to 7.8).
5. Pour in 16 oz of Cal Spas “Metal Protector” in the center of the spa.
6. Add Stain and Scale Prevention.
7. Add either chlorine or bromine (but not both).

Chlorine: Add two tablespoons of Cal Spas “Chlorine Granules” to the spa water.

Bromine: Add 2 oz of Cal Spas “Go Brom” to establish a bromine base.

Add 2 Cal Spas “Bromine Tablets” to bromine floater.

Set floater opening at #2.

8. Turn on jets for 15 minutes. Leave spa uncovered during this time.
9. Put cover on spa and allow to heat up to desired temperature.

Water level is very important to the operation of your spa. If the water level is too low or too high, your spa will not operate properly. The water level should be about six inches from the top when the spa is not being used.

Maintenance Schedule

| | |
|-------------------------------------|--|
| Each time you refill the spa | Follow the section "Starting the Spa with Fresh Water". |
| Prior to each use | Test the spa water using either test strips a reagent test kit. Adjust chemical levels as necessary. |
| Once a week | Test the spa water using either test strips a reagent test kit. Adjust chemical levels as necessary. |
| Once a month | Deep clean your spa's filter. (Follow filter cleaning instruction at beginning of Clear Water Plan) |
| Every two to four months | <p>Drain and clean your spa with "Multi-Purpose Cleaner".</p> <p>Polish the acrylic surface with "Fast Sheen".</p> <p>Clean and treat spa cover, pillows, and Cal Select cabinet (if equipped) with "Cover Protector".</p> <p>Refill your spa, following the section "Starting the Spa with Fresh Water".</p> <p>If you are using the Cal Clarity Automatic Bromine Generator Clear Water Plan, add new sodium bromide to the water.</p> |
| Once a year | <p>Replace filter cartridges if the pleats appear frayed.</p> <p>If you use an ozonator, you will need to replace the ozone cartridge.</p> <p>If you use the Cal Pure UV water sanitizer, you will need to replace the UV lamp.</p> |

We recommend that your spa water be changed every 4 to 6 months. You may find the need to change your spa water more frequently with heavy use. When empty, your spa should be cleaned with a non-abrasive cleaner, such as Cal Spas™ All Surface Cleaner, and then rinsed thoroughly.

Ozonator

The ozone generator releases ozone into the spa water. You will still need to test for chlorine and occasionally replenish it to return the chlorine level to the baseline.

Follow the spa start up procedure on page 29.

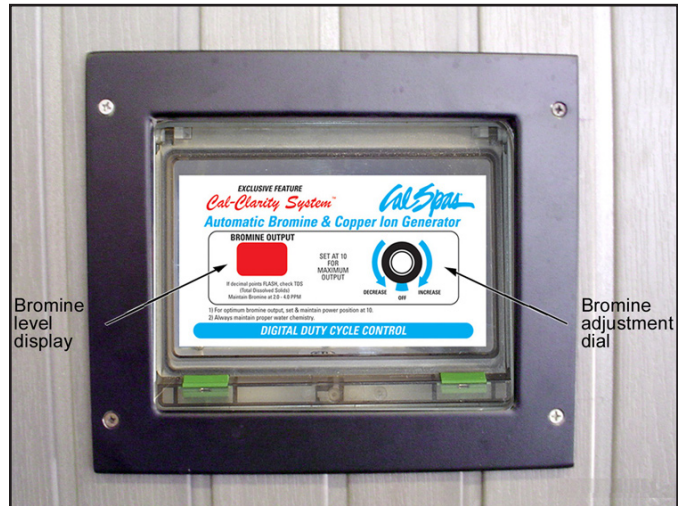
Set the spa's filtration time for "F4". This activates the ozonator and produces the ozone gas. Note: Filtration time may need to be increased with heavy bather load.

Cal Clarity Bromine Generator

The Cal Clarity bromine generator automatically generates and releases free bromine into the spa water. You will still need to test for bromide and occasionally replenish it to return the bromine level to the baseline.

Start Up

1. Clean surface of spa with Cal Spas "Multi-Purpose Cleaner".
 2. Apply a protective coat of Cal Spas "Fast Sheen" to the acrylic surface.
 3. Fill spa to proper water level with normal tap water. Do not use soft water.
 4. Use a test strip and balance the spa water:
 - Adjust total alkalinity (acceptable range is 80 to 120 ppm),
 - Adjust pH if necessary (between 7.2 to 7.8).
 5. Pour in 16 oz. of Cal Spas "Metal Protector" in the center of spa.
 6. Test for TDS (total dissolved solids).
 - The ideal range is 50 to 300 ppm.
 - TDS must be less than 500 ppm to start with.
 7. Test for phosphates. Phosphate level should be below 200 ppb. Remove phosphates if necessary.
 8. Determine the gallon capacity of the spa. Be accurate, because this determines the amount of TRU BLU that will be added. Consult the Cal Spas Pre-delivery Guide for spa gallons.
 9. Power up the spa and make sure all the spa's pumps are set to high speed. Turn the dial on the face of the Cal Clarity Bromine Generator to OFF.
 10. Sprinkle evenly over the surface of the spa one 2lb bottle of TRU BLU sodium bromide per 100 US gallons (370 liters) of water. Do not add too much!
- Note: Each bottle of TRU BLU will raise TDS / conductivity amount approximately 500 ppm.
11. Allow spa to run for 15 minutes so the TRU BLU can dissolve completely before proceeding to the next step.
 12. Use sodium bromide test strips (not bromine) and adjust sodium bromide level to 7.4 to 8.2 (equates to 1700 to 2500 ppm TDS level).
 13. Add 2 oz of Cal Spas "Oxidizer Shock" to help burn out impurities in fill water.
 14. Turn the dial on the bromine generator clockwise until the LED display reads 10.
 15. This will initiate the build up of a bromine bank.
 16. Set the filtration cycle to "continuous" (F-C) for the first 24 hours.
 17. Put the cover on and allow the spa to heat to desired temperature.



Adjusting The Proper Bromine Levels

1. After start up, decrease the filtration cycle to F-4 and monitor the bromine level until it is within the recommended range.
2. Use bromine test strips to achieve a 3-5 ppm recommended level.

Note: It can take several days for the bromine level to stabilize because the fill water that was used sometimes contains contaminants that need to be neutralized, thereby using up the initial bromine that is generated.

3. Once the desired level has been achieved, turn the dial down until a maintenance setting is achieved. The common maintenance setting for an average bather load is 4.

When changing the setting, use bromine test strips to determine when you have reached the level you want.

Once a Week

1. Test spa water with bromine test strip.
2. Based on test strip readings:
 - Adjust alkalinity if necessary.
 - Adjust pH if necessary.
 - Increase / decrease bromine production with dial if required.
3. Remove dirty filter from the spa and rinse off.
4. Place your clean, extra filter cartridge back into the spa.
5. Add 2 oz of Cal Spas "Oxidizer Shock" to spa. Run spa for 15 minutes
6. Vacuum debris from the bottom of your spa with the "Spa Vacuum".
7. Replace cover.

Troubleshooting Water Clarity Problems

| Problem | Probable Causes | Possible Solutions |
|--|---|--|
| Cloudy Water | <ul style="list-style-type: none"> • Dirty filter • Excessive oils / organic matter • Improper sanitization • Suspended particles / organic matter • Overused or old water | <ul style="list-style-type: none"> • Clean filter • Shock spa with sanitizer • Add sanitizer • Adjust pH and/or alkalinity to recommended range • Run jet pump and clean filter • Drain and refill the spa |
| Water Odor | <ul style="list-style-type: none"> • Excessive organics in water • Improper sanitization • Low pH | <ul style="list-style-type: none"> • Shock spa with sanitizer • Add sanitizer • Adjust pH to recommended range |
| Chlorine Odor | <ul style="list-style-type: none"> • Chloramine level too high • Low pH | <ul style="list-style-type: none"> • Shock spa with sanitizer • Adjust pH to recommended range |
| Musty Odor | <ul style="list-style-type: none"> • Bacteria or algae growth | <ul style="list-style-type: none"> • Shock spa with sanitizer – if problem is visible or persistent, drain, clean and refill the spa |
| Organic buildup / scum ring around spa | <ul style="list-style-type: none"> • Buildup of oils and dirt | <ul style="list-style-type: none"> • Wipe off scum with clean rag – if severe, drain the spa, use a spa surface and tile cleaner to remove the scum and refill the spa |
| Algae Growth | <ul style="list-style-type: none"> • High pH • Low sanitizer level | <ul style="list-style-type: none"> • Shock spa with sanitizer and adjust pH • Shock spa with sanitizer and maintain sanitizer level |
| Eye Irritation | <ul style="list-style-type: none"> • Low pH • Low sanitizer level | <ul style="list-style-type: none"> • Adjust pH • Shock spa with sanitizer and maintain sanitizer level |
| Skin Irritation / Rash | <ul style="list-style-type: none"> • Unsanitary water • Free chlorine level above 5 ppm | <ul style="list-style-type: none"> • Shock spa with sanitizer and maintain sanitizer level • Allow free chlorine level to drop below 5 ppm before spa use |
| Stains | <ul style="list-style-type: none"> • Total alkalinity and/or pH too low • High iron or copper in source water | <ul style="list-style-type: none"> • Adjust total alkalinity and/or pH • Use a stain and scale inhibitor |
| Scale | <ul style="list-style-type: none"> • High calcium content in water – total alkalinity and pH too high | <ul style="list-style-type: none"> • Adjust total alkalinity and pH – if scale requires removal, drain the spa, scrub off the scale, refill the spa and balance the water • Use a stain and scale inhibitor |

Cleaning and Maintenance

Removing and Reseating the Pillows

You can remove the pillows for cleaning and maintenance quickly and easily. This method works for all types of pillows.

Grab the lower edge of the pillow with both hands firmly and pull up. As you do this, the pillow inserts will pop out of the holes.



Reseat the pillows by aligning the pillow inserts with the holes and striking the pillow hard enough to insert the pegs back into the holes.



Spa Cover

Important! Keep the spa covered when not in use!

- Covered spas will use less electricity in maintaining your set temperature.
- Covering your spa will protect your spa's finish from the sun's ultraviolet rays.
- You are required to keep the spa covered to maintain warranty coverage.
- Covering your spa helps prevent children from drowning in the spa.

See the manual enclosed with your cover for instructions on mounting the locks and how to lock and unlock the cover.

In addition, while the spa cover is rigid, it is not designed to support any weight. Therefore, as a safety precaution and to preserve the life of your cover, you must not sit, stand, or lie on it, nor should you place objects of any kind on top of it.

Draining Your Portable Spa

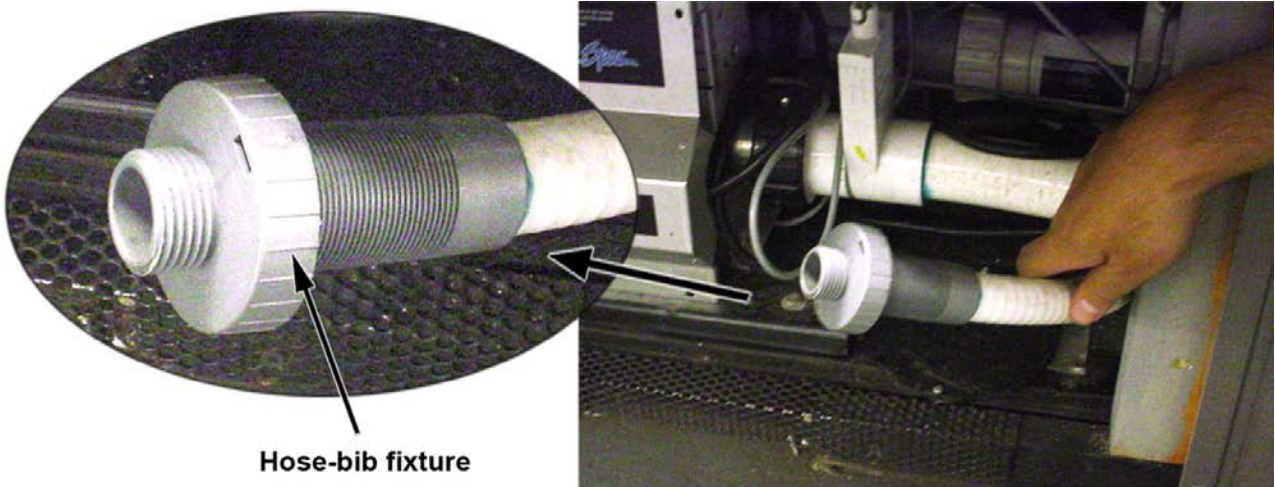
Your spa should be drained every four to six months, and refilled with fresh tap water. The following is the recommended method for draining your spa.

1. Turn off the power at the breaker.
2. Remove all filters.

If your drain valve is mounted on the side of the spa cabinet as shown at right, proceed to step 5.

If your drain valve is located inside the spa cabinet:

3. Using a Phillips screwdriver, remove the screws to the access panel and open it.
4. Locate hose ending with the 3/4 inch hose-bib fixture.



5. Hook up the female end of a garden hose to the drain fitting.
6. Place the other end of the garden hose where you would like the water to drain to.
7. Twist the hose-bib fixture counterclockwise and pull to open the drain.
8. Let spa drain completely, then remove garden hose.
9. Twist the hose-bib fixture clockwise to close it.

Cleaning and Replacing the Filter

Filtration is one of the most important steps you can take to ensure clean, clear water. It is far less expensive to fix water clarity problems by filtering your spa than by using excessive amounts of chemicals, excessive filtration times, or by water replacement.

See the section "Clear Water Plan" for more information on cleaning your filter.

Winterizing (Cold Climate Draining)

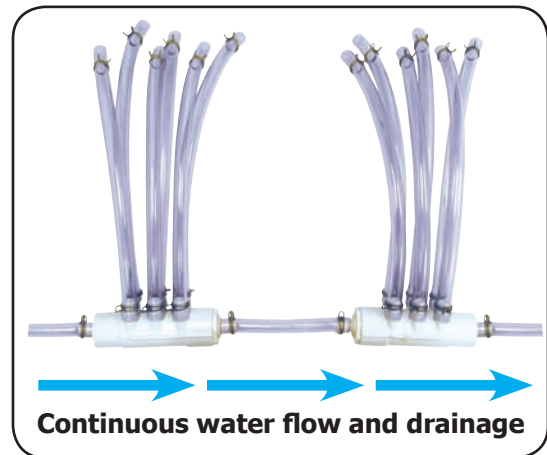
In many areas of the country, the temperature drops below 32°F (0°C). We recommend that you always have your spa full of water and running at normal spa temperatures (80°F to 100°F, 26.7°C to 37.8°C). This will help reduce the risk of freezing in your spa and your spa's equipment.

Warning: If you find the need to drain your spa, please be aware of the potential of freezing in your spas equipment and plumbing. Even if the directions below are followed perfectly, there is no guarantee that your spa will not suffer freeze damage.

Freeze damage is not covered by your warranty.

1. Open all filter covers.
2. Remove the filter baskets and filters.
3. Drain your spa completely as described in the instructions above.
4. Vacuum water from the spa's main drain fitting with a wet/dry vacuum.
5. Remove drain plugs from the front of the pumps.
6. Disconnect the unions from both sides of the pump.
7. Blow any remaining water out of the jets and equipment area with the wet/dry vacuum.
8. Cover your spa with a good spa cover and an all-weather tarp to ensure that neither rain nor snow enters the spa.

NOTE: All manifolds are plumbed in series directly to the main drain (see example at right), making it easier to remove water and reducing the possibility of freeze damage.



Vacation Care

You can leave your spa unattended for up to two weeks if you follow these instructions.

ALWAYS lock your cover using the cover locks if you plan to be away from home and the spa is filled with water.

1. Set the spa to Sleep Mode. (See instructions on page 13 or page 14 for changing modes.)
2. Following the water quality instructions starting on page 24, adjust the pH.
3. Shock the water (add either chlorine or bromine sanitizer).
4. When you return, check and adjust the pH and shock the water.

If you will not be using your spa for longer than 14 days and a spa maintenance service is not available, we strongly recommend you drain or winterize your spa.

Cleaning Your Spa

Spa Cover and Pillows

Due to the constant punishment your spa cover and pillows receive, you should protect them by applying Cal Spas Vinyl and Leather Cleaner as part of your monthly maintenance plan. It is specifically designed to protect spa covers and pillows from chemical and ultraviolet light damage. It accomplishes this without leaving an oily residue behind that is normally associated with common automotive vinyl protectants.

Warning: Do not use automotive vinyl protectants on spa covers or pillows. These products are generally oil-based and will cause severe water clarity issues that are difficult to correct.

Spa Shell

Each time you drain your spa, before you refill it you should clean your spa shell with our Cal Spas All-Purpose Cleaner and apply a protective coat of Cal Spas Fast Sheen.

Cal Spas All-Purpose Cleaner is a low detergent, non-abrasive cleaner specifically formulated to clean the spa without damaging its acrylic finish.

Cal Spas Fast Sheen is a non-oil based wax that is specifically formulated to protect the spa's finish from the chemicals and minerals associated with normal spa use.

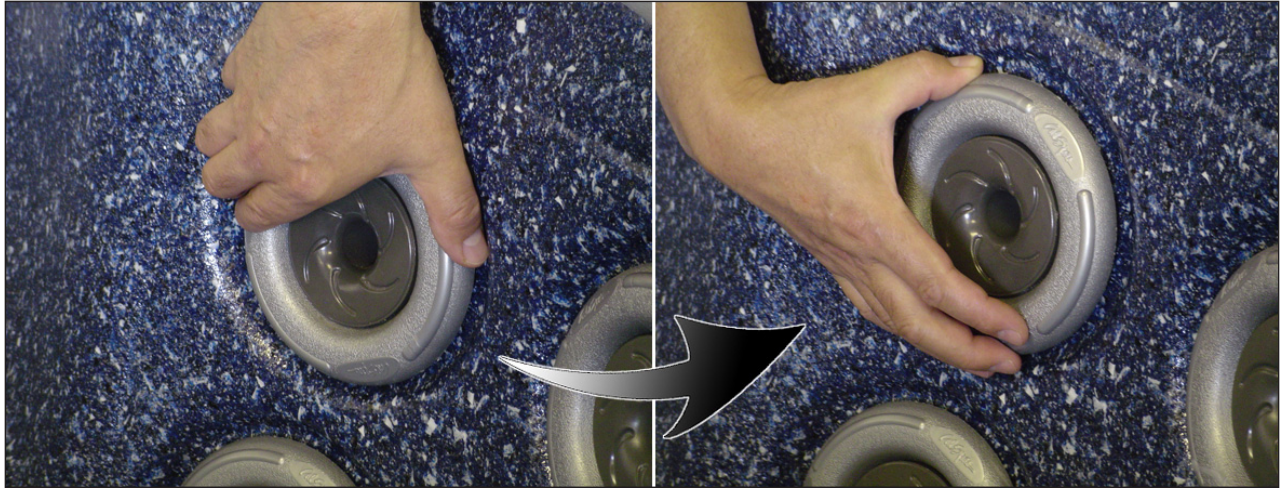
1. Spray Cal Spas™ Multi-Purpose Cleaner directly to the spa's finish.
2. Wipe clean with a soft cloth.
3. Repeat on heavily calcified areas.
4. Wipe spa thoroughly with a wet sponge, rinsing often in a bucket of clean water.
5. Allow the spa to dry completely.
6. Apply a coat of Cal Spas™ Fast Sheen to the spa's entire finish with a soft cloth or sponge.
7. Allow Fast Sheen to dry until white and powdery.
8. Buff clean with a soft cloth, rotating frequently.

IMPORTANT: Do not use any of these products on spas full of water. Only apply to clean, cool, dry surfaces. Incorrect product usage may cause water clarity issues.

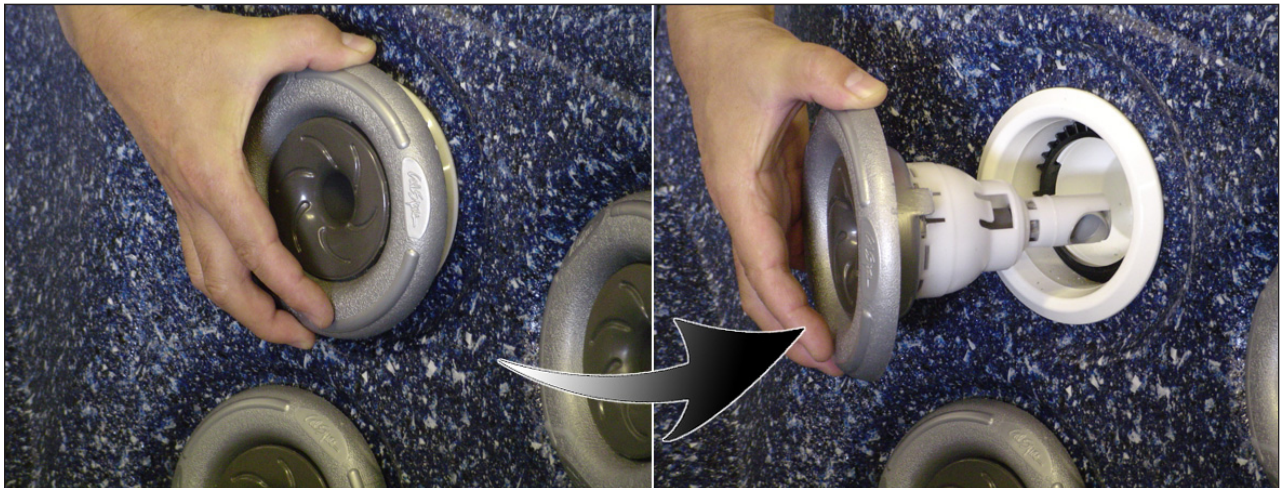
Jet Removal and Replacement

Rotate the jet face counterclockwise until you feel some resistance.

Continue to rotate the jet for another quarter turn. You will feel the jet snap out of position. Continue to rotate the jet as you pull it out of the jet well.



To replace jets, insert the jet in the jet well and push and rotate it clockwise until you feel it snap into position. When the jet face can be rotated freely, it is properly seated.



Using the Entertainment System

Some spas may be equipped with audio/visual entertainment options. Several options are available and include marine grade CD players and an iPod docking station. Each spa equipped with an audio/visual system is delivered with the manufacturer's operating instructions in a clear plastic bag.

The instructions contained in this manual describe only basic functions. See the manufacturer's operating instructions for other features and functions. We strongly recommend that you read the manufacturer's instructions prior to operating this unit.

Observe the following precautions for your entertainment system:

- Make sure that hands and CDs are dry before coming in contact with this or any electronic option.
- Always close the CD protective door.
- Do not place wet CD's into this unit at any time.
- Water damage is not covered by Cal Spas or the manufacturer's warranty.

Although the marine grade entertainment system is encased in a plastic housing with weather seals, the system is **water resistant** and **NOT waterproof**. You must take every precaution to keep this system dry! Water damage is not covered by Cal Spas or the manufacturer's warranty.

Listening to the Radio

1. Press the POWER button on the unit or the remote control to turn the system on. The system automatically starts in the mode it was in when it was last shut off.
2. Press the SOURCE or MODE button to switch to the radio mode.
3. Press the left and right arrows located at the far right of the panel to tune the radio to a station.

Playing a CD

You can play CDs with any of the media systems.

1. Insert a disc in the disc drive as described above. The player will identify the type of disc and begin playing it.
2. Use either the remote control or the buttons on the faceplate to start and stop the player and to jump to selections.
3. To remove the disc, press the EJECT button.

Inserting and Ejecting a Disk

For the Sony CDX-HS70MW system:

1. Press the OPEN button on the unit. The faceplate will lower and expose the disk drive.
2. Insert a disk in the disk drive.
3. Flip up the faceplate.

To remove the disc, press the OPEN button. The faceplate will open. Press the small EJECT button located to the left of the disk drive slot.

For the Sony CDX-GT10M system, simply insert a disk into the slot in the faceplate. To remove the disc, press the EJECT button.

Using the AQ-DM-2 iPod Docking Station

The AQ-DM-2 iPod and MP3 player docking station is fully integrated with your Cal Spa. The docking station is tailored to the needs of Apple iPod owner, although it will play most other MP3 players. The docking station is specially configured to accommodate currently available iPods, using five interchangeable inserts in the docking bay.



The docking station comes with its own owner's manual. It describes parts included, installation, and proper use. Owners of this system must read the manufacturer's instructions prior to operating this unit. The instructions are shipped inside the docking station behind the remote control.

Note: The system includes an MP3 docking station and remote control and does NOT INCLUDE an MP3 player such as an iPod.



Synchronizing the Remote Control with the Docking Station

Before you can use the remote control with the docking station, they need to be synchronized.

1. Press and hold the  button (Play/Pause) on the remote control and the press the  Power button simultaneously for two seconds.

The LCD will display "Pair".



2. Turn on the docking station by pressing the power button inside the docking bay within 10 seconds after the remote is paired.
3. Once the synchronizing is complete, the LCD will return to the original screen setting.

Note: If you lose your remote control and buy a replacement, follow the instructions above to synchronize the remote before normal usage.

Using the iSound Remote Music System

The iSound Remote Music System comes with the SoundCast iCast transmitter and OutCast wireless speaker. This is a stand-alone audio product manufactured by SoundCast Systems. It is not integrated with any Cal Spa product.

The OutCast system is ideal for use outdoors and especially in an environment with a pool or spa. The portable wireless speaker is extremely water resistant (but not waterproof) and is free from interference from other wireless devices such as cordless or cell phones, microwave ovens, remotes, or wireless routers.

The OutCast system comes with its own owner's manual. It describes parts included, installation, and proper use. Owners of the OutCast system must read this manual.

The iCast Transmitter is tailored to the needs of Apple iPod owner. The iCast transmitter is specially configured to accommodate currently available iPods, using approved interchangeable inserts in the docking bay.

Note: The OutCast system includes an MP3 docking station, transmitter, and remote speaker and does NOT INCLUDE an MP3 player such as an iPod.



About the SunBriteTV Monitor

Because Cal Spas does not offer an integrated TV or DVD option with any line of spas, we recommend spa owners use the SunBriteTV monitor as a high quality, weather resistant video monitor.

The SunBriteTV monitor is a stand-alone video product and is not manufactured by Cal Spas. The SunBriteTV monitor comes with its own owner's manual. Owners of the SunBriteTV must read this manual.

It is designed for permanent outdoor installation and is suitable for use adjacent to your spa.

This television is highly adaptable to most kinds of installation with a wide variety of video input options such as DVD or cable TV and easily customizable according to spa owners' preferences and circumstances.

You will need to coordinate the installation of your video system with your spa dealer.



THE SUNBRITETV MUST BE INSTALLED NO LESS THAN FIVE FEET AWAY FROM ANY BODY OF WATER (SUCH AS A POOL OR SPA).






Check local building codes and consult your spa dealer for proper installation guidelines.

Appendix






Replacement Parts

| Jets | |
|--|---|
| CRW 5.5" Power Storm Stainless steel: PLU21703677 Cobalt blue: PLU21703677-BLU |  |
| ED 2.25" Euro Directional Stainless steel: PLU21703674 Cobalt blue: PLU21703662-BLU |  |
| ELE 2.25" Euro Less Eyeball Stainless steel: PLU21703663 Cobalt blue: PLU21703663-BLU |  |
| EW 2" Euro Stainless steel: PLU21703621 Cobalt blue: PLU21703621-BLU |  |
| EWD 2" Neck Euro Stainless steel: PLU21703675 Cobalt blue: PLU21703675-BLU |  |
| mfc 3" Micro Flow Directional Stainless steel: PLU21703664 Cobalt blue: PLU21703664-BLU |  |
| MFRW 3.25" Neck Blasters Stainless steel: PLU21703627 Cobalt blue: PLU21703627-BLU |  |
| MFW 4" Maxi Flow Stainless steel: PLU21703630 Cobalt blue: PLU21703630-BLU |  |
| mfw 3" Micro Flow Stainless steel: PLU21703631 Cobalt blue: PLU21703631-BLU |  |

| Jets | |
|---|---|
| MJW 5.5" Shower Storm Stainless steel: PLU21703625 Cobalt blue: PLU21703625-BLU |  |
| MNW 3" Neck Stainless steel: PLU21703628 Cobalt blue: PLU21703628-BLU |  |
| msw 3" Micro Swirl Stainless steel: PLU21703632 Cobalt blue: PLU21703632-BLU |  |
| OZ 2" Ozone Injector Stainless steel: PLU21700818 Cobalt blue: PLU21700818-BLU |  |
| PSA 5.5" Power Storm Acupressure Stainless steel: PLU21703668 Cobalt blue: PLU21703668-BLU |  |
| PSD 4" Polystorm Directional Stainless steel: PLU21703661 Cobalt blue: PLU21703661-BLU |  |
| PSR 5.25" Power Storm Rifle Stainless steel: PLU21703666 Cobalt blue: PLU21703666-BLU |  |
| PST 5.25" Power Storm Twister Stainless steel: PLU21703665 Cobalt blue: PLU21703665-BLU |  |





| Jets | |
|--|---|
| <p>SFW 5.5" Sure Flow Stainless steel: PLU21703626 Cobalt blue: PLU21703626-BLU</p> |  |
| <p>SW Swim PLU21700565</p> |  |
| <p>SXW 5.5" Storm, 2 Hole Stainless steel: PLU21703623 Cobalt blue: PLU21703623-BLU</p> |  |
| <p>T 5.25" Tornado Stainless steel: PLU21703629 Cobalt blue: PLU21703629-BLU</p> |  |
| <p>W 4" Whirlpool Stainless steel: PLU21703609 Cobalt blue: PLU21703609-BLU</p> |  |
| <p>Jet Stream Propulsion PLU21702620</p> |  |





| Valves | |
|--|---|
| <p>1" LED Diverter Valve with Swoosh Logo PLU21300450</p> |  |
| <p>2" LED Diverter Valve with Swoosh Logo PLU21300460</p> |  |
| <p>1" Diverter Valve Silver Handle with Dark Gray Cap and Wall Fitting PLU21300470</p> |  |
| <p>2" Diverter Valve Silver Handle with Dark Gray Cap and Wall fitting PLU21300480</p> |  |
| <p>Air Control with Swoosh Logo PLU21300500</p> |  |
| <p>Air Control Valve Silver Handle with Dark Gray Cap and Wall Fitting PLU21300510</p> |  |
| <p>2" Large Diverter Valve, Silver Cap PLU21300043</p> |  |
| <p>1" Large Diverter Valve, Silver Cap PLU21300047</p> |  |
| <p>1" Air Control, Silver Cap PLU21700378</p> |  |

| Pillows | |
|--------------------------------------|---|
| Quad ACC01400931 |  |
| Neck Blaster ACC01401010 |  |
| Cascade (Logo) ACC01401030 |  |
| Infinity ACC01400950 |  |
| Neck ACC01401040 |  |

| Drains | |
|--|--|
| Main Drain, Super Hi Flo Suction 2 1/2" Silver PLU21400137 |  |
| Bottom Drain Star Suction Cover PLU21400197 |  |
| Bottom Drain Filtration Return Assembly OZO18300005 |  |

| Waterfalls | |
|--|---|
| Cascade Waterfall PLU21800820 |  |
| Filter Waterfall PLU21800830 |  |
| Vertical Waterfall PLU21800840 |  |

| Filters | |
|---|---|
| Filter Cartridge, 75 Sq Ft, Anti-Bacterial, with Chemical Chamber FIL11100215 |  |
| Filter Cartridge, 50 Sq Ft, Anti-Bacterial, with Chemical Chamber FIL11100205 |  |
| Filter Cartridge 75 Sq Ft, Anti-Bacterial FIL11703211 |  |
| Filter Cartridge, 50 Sq Ft, Anti-Bacterial FIL11100201 |  |

| Lights | |
|---|---|
| Light Assembly Complete LIT16000150 |  |
| Light Mini 2" Diameter LIT16000151 |  |
| Walfitting, Clear Lens Cap, Jumbo Spa Light, 5" LIT16100153 |  |
| Red Lens Insert, Jumbo Spa Light LIT16100155 |  |
| Blue Lens Insert, Jumbo Spa Light LIT16100156 |  |

| Pure XL UV Water Sanitizer | |
|---|--|
| Pure XL Water Sanitizer, Complete System | |
| Replacement UV Lamp LIT16000320 | |
| Replacement Quartz Sleeve LIT16100260 | |
| Quartz Cap, Clear LIT16800020 | |
| Rubber Seal, Purple LIT16100227 | |
| 25 Watt Transformer, 220V ELE09900445 | |

| LED Lights | |
|---|---|
| Small Controller Daisy Chain LIT16100179 |  |
| 2' Daisy Chain Jumper LIT16100183 |  |
| Overmold Adapter for Small Controller LIT16100209 |  |
| Quad LED Daisy Chain Assembly LIT16100211 |  |
| Dual LED Daisy Chain Assembly LIT16100212 |  |
| 7 LED 2" Light Daisy Chain with Stand-Off LIT16100214 |  |
| Faceted Bullet Lens, Polycarbonate, UV Stable LIT16100215 |  |
| Silicone O-Ring for Lens LIT16100208 | |

Replacement Cabinet Panels

The complete selection of replacement cabinets for all models is very extensive and too lengthy for this owner's manual. See your Cal Spas deal to order replacement panels for your spa, or call 1-800-CAL-SPAS.

Covers

| Avalon Series | |
|---|-------------|
| A515/A526/A534 84" X 64" | |
| Standard Rust | ACC01200460 |
| Standard Gray | ACC01200461 |
| Standard Slate | ACC01200464 |
| Standard Palomino | ACC01200466 |
| Deluxe Rust | ACU02200500 |
| Deluxe Gray | ACU02200501 |
| Deluxe Slate | ACU02200502 |
| Deluxe Palomino | ACU02200499 |
| A726 / A734 / A744 84" X 84" | |
| Standard Rust | ACC01200410 |
| Standard Gray | ACC01200411 |
| Standard Slate | ACC01200412 |
| Standard Palomino | ACC01200419 |
| Deluxe Rust | ACU02200250 |
| Deluxe Gray | ACU02200251 |
| Deluxe Slate | ACU02200256 |
| Deluxe Palomino | ACU02200257 |
| A826 / A834 / A844 / A857 93" X 93" | |
| Standard Rust | ACC01200420 |
| Standard Gray | ACC01200421 |
| Standard Slate | ACC01200422 |
| Standard Palomino | ACC01200423 |
| Deluxe Rust | ACU02200260 |
| Deluxe Gray | ACU02200261 |
| Deluxe Slate | ACU02200266 |
| Deluxe Palomino | ACU02200267 |
| A970L 93" X 130" | |
| Standard Rust | ACC01200450 |
| Standard Gray | ACC01200451 |
| Standard Slate | ACC01200452 |
| Standard Palomino | ACC01200454 |
| Deluxe Rust | ACU02200290 |
| Deluxe Gray | ACU02200291 |
| Deluxe Slate | ACU02200295 |
| Deluxe Palomino | ACU02200289 |

| Diamond Series | |
|---|-------------|
| D836L / D836B / D847M / D850L / D850B / D865B / D865L 93" X 93" | |
| Standard Rust | ACC01200420 |
| Standard Gray | ACC01200421 |
| Standard Slate | ACC01200422 |
| Standard Palomino | ACC01200423 |
| Deluxe Rust | ACU02200260 |
| Deluxe Gray | ACU02200261 |
| Deluxe Slate | ACU02200266 |
| Deluxe Palomino | ACU02200267 |
| Custom Teal | ACU02200262 |
| Custom Navy | ACU02200263 |
| Custom Hunter | ACU02200264 |
| D846D 93" OCTAGON | |
| Standard Rust | ACC01200434 |
| Standard Gray | ACC01200435 |
| Standard Slate | ACC01200436 |
| Standard Palomino | ACC01200433 |
| Deluxe Rust | ACU02200277 |
| Deluxe Gray | ACU02200278 |
| Deluxe Slate | ACU02200279 |
| Deluxe Palomino | ACU02200276 |
| Custom Teal | ACU02200287 |
| Custom Navy | ACU02200288 |
| Custom Hunter | ACU02200298 |
| D957E 96" x 135" | |
| Standard Rust | ACC01200440 |
| Standard Gray | ACC01200441 |
| Standard Slate | ACC01200444 |
| Standard Palomino | ACC01200445 |
| Deluxe Rust | ACU02200280 |
| Deluxe Gray | ACU02200281 |
| Deluxe Slate | ACU02200285 |
| Deluxe Palomino | ACU02200286 |
| Custom Teal | ACU02200282 |
| Custom Navy | ACU02200283 |
| Custom Hunter | ACU02200284 |

| D950N / D965N / D963S / D950S | | 93" x 130" |
|--|-------------|-------------------|
| Standard Rust | ACC01200450 | |
| Standard Gray | ACC01200451 | |
| Standard Slate | ACC01200452 | |
| Standard Palomino | ACC01200454 | |
| Deluxe Rust | ACU02200290 | |
| Deluxe Gray | ACU02200291 | |
| Deluxe Slate | ACU02200295 | |
| Deluxe Palomino | ACU02200289 | |
| Custom Teal | ACU02200296 | |
| Custom Navy | ACU02200297 | |
| Custom Hunter | ACU02200299 | |
| | | |
| D525L | | 64" x 84" |
| Standard Rust | ACC01200460 | |
| Standard Gray | ACC01200461 | |
| Standard Slate | ACC01200464 | |
| Standard Palomino | ACC01200466 | |
| Deluxe Rust | ACU02200500 | |
| Deluxe Gray | ACU02200501 | |
| Deluxe Slate | ACU02200502 | |
| Deluxe Palomino | ACU02200499 | |
| Custom Teal | ACU02200503 | |
| Custom Navy | ACU02200504 | |
| Custom Hunter | ACU02200505 | |
| | | |
| D736B / D736L / D750B / D750L / D765B / D765L | | 84" x 84" |
| Standard Rust | ACC01200410 | |
| Standard Gray | ACC01200411 | |
| Standard Slate | ACC01200412 | |
| Standard Palomino | ACC01200419 | |
| Deluxe Rust | ACU02200250 | |
| Deluxe Gray | ACU02200251 | |
| Deluxe Slate | ACU02200256 | |
| Deluxe Palomino | ACU02200257 | |
| Custom Teal | ACU02200252 | |
| Custom Navy | ACU02200253 | |
| Custom Hunter | ACU02200254 | |

| D635V | | 84" X 93" |
|-------------------|-------------|------------------|
| Standard Rust | ACC01200462 | |
| Standard Gray | ACC01200463 | |
| Standard Slate | ACC01200465 | |
| Standard Palomino | ACC01200467 | |
| Deluxe Rust | ACU02200510 | |
| Deluxe Gray | ACU02200511 | |
| Deluxe Slate | ACU02200512 | |
| Deluxe Palomino | ACU02200509 | |
| Custom Teal | ACU02200513 | |
| Custom Navy | ACU02200514 | |
| Custom Hunter | ACU02200515 | |

| Fitness Series | |
|-----------------------|-------------|
| F2400 | |
| 96" x 169" | |
| Deluxe Rust | ACU02200420 |
| Deluxe Gray | ACU02200421 |
| Deluxe Slate | ACU02200422 |
| Deluxe Palomino | ACU02200423 |
| Custom Teal | ACU02200424 |
| Custom Navy | ACU02200425 |
| Custom Hunter | ACU02200426 |
| | |
| F2500 | |
| 93" x 206" | |
| Deluxe Rust | ACU02200400 |
| Deluxe Gray | ACU02200401 |
| Deluxe Slate | ACU02200402 |
| Deluxe Palomino | ACU02200406 |
| Custom Teal | ACU02200403 |
| Custom Navy | ACU02200404 |
| Custom Hunter | ACU02200405 |
| | |
| F4700 | |
| 96" x 202" | |
| Deluxe Rust | ACU02200407 |
| Deluxe Gray | ACU02200408 |
| Deluxe Slate | ACU02200409 |
| Deluxe Palomino | ACU02200410 |
| Custom Teal | ACU02200411 |
| Custom Navy | ACU02200412 |
| Custom Hunter | ACU02200413 |

| Family II Series | |
|--------------------------|-------------|
| FII515B 78" ROUND | |
| Standard Rust | |
| Standard Gray | |
| Standard Slate | |
| Standard Palomino | |
| Deluxe Rust | |
| Deluxe Gray | |
| Deluxe Slate | |
| Deluxe Palomino | |
| Deluxe Teal | |
| Deluxe Navy | |
| Deluxe Hunter | |
| FII518B 43" x 83" | |
| Standard Rust | |
| Standard Gray | |
| Standard Slate | |
| Standard Palomino | |
| Deluxe Rust | |
| Deluxe Gray | |
| Deluxe Slate | |
| Deluxe Palomino | |
| Deluxe Teal | |
| Deluxe Navy | |
| Deluxe Hunter | |
| FII520B 54" x 78" | |
| Deluxe Rust | ACC01200370 |
| Standard Gray | ACC01200371 |
| Standard Slate | ACC01200373 |
| Standard Palomino | ACC01200374 |
| Deluxe Rust | ACU02200210 |
| Deluxe Gray | ACU02200211 |
| Deluxe Slate | ACU02200216 |
| Deluxe Palomino | ACU02200217 |
| Deluxe Teal | ACU02200212 |
| Deluxe Navy | ACU02200213 |
| Deluxe Hunter | ACU02200214 |

| FII730/FII745 84" x 84" | |
|--------------------------------|-------------|
| Standard Rust | ACC01200410 |
| Standard Gray | ACC01200411 |
| Standard Slate | ACC01200412 |
| Standard Palomino | ACC01200419 |
| Deluxe Rust | ACU02200250 |
| Deluxe Gray | ACU02200251 |
| Deluxe Slate | ACU02200256 |
| Deluxe Palomino | ACU02200257 |
| Deluxe Teal | ACU02200252 |
| Deluxe Navy | ACU02200253 |
| Deluxe Hunter | ACU02200254 |
| FII830/FII845 93" x 93" | |
| Standard Rust | ACC01200420 |
| Standard Gray | ACC01200421 |
| Standard Slate | ACC01200422 |
| Standard Palomino | ACC01200423 |
| Deluxe Rust | ACU02200260 |
| Deluxe Gray | ACU02200261 |
| Deluxe Slate | ACU02200266 |
| Deluxe Palomino | ACU02200267 |
| Deluxe Teal | ACU02200262 |
| Deluxe Navy | ACU02200263 |
| Deluxe Hunter | ACU02200264 |
| Galaxy Series | |
| GX49 93" x 93" | |
| Deluxe Rust | ACU02200260 |
| Deluxe Gray | ACU02200261 |
| Deluxe Slate | ACU02200266 |
| Deluxe Palomino | ACU02200267 |

| Victory Xtreme Series | |
|-----------------------------------|-------------|
| VX901 72" x 72" | |
| Standard Rust | ACC01200566 |
| Standard Gray | ACC01200567 |
| Standard Slate | ACC01200568 |
| Standard Palomino | ACC01200559 |
| FX624B 76" x 84" | |
| Standard Rust | ACC01200406 |
| Standard Gray | ACC01200407 |
| Standard Slate | ACC01200508 |
| Standard Palomino | ACC01200509 |
| Deluxe Rust | ACU02200362 |
| Deluxe Gray | ACU02200363 |
| Deluxe Slate | ACU02200367 |
| Deluxe Palomino | ACU02200358 |
| Custom Teal | ACU02200372 |
| Custom Navy | ACU02200373 |
| Custom Hunter | ACU02200374 |
| VX724L 78" x 84" | |
| Standard Rust | ACC01200520 |
| Standard Gray | ACC01200521 |
| Standard Slate | ACC01200522 |
| Standard Palomino | ACC01200523 |
| VX726B/L, VX740L 84" x 84" | |
| Standard Rust | ACC01200410 |
| Standard Gray | ACC01200411 |
| Standard Slate | ACC01200412 |
| Standard Palomino | ACC01200419 |
| Deluxe Rust | ACU02200250 |
| Deluxe Gray | ACU02200251 |
| Deluxe Slate | ACU02200256 |
| Deluxe Palomino | ACU02200257 |
| Custom Teal | ACU02200252 |
| Custom Navy | ACU02200253 |
| Custom Hunter | ACU02200254 |

| VX834B/L, VX848B/L, VX860B/L 93" x 93" | |
|---|-------------|
| Standard Rust | ACC01200420 |
| Standard Gray | ACC01200421 |
| Standard Slate | ACC01200422 |
| Standard Palomino | ACC01200423 |
| Deluxe Rust | ACU02200260 |
| Deluxe Gray | ACU02200261 |
| Deluxe Slate | ACU02200266 |
| Deluxe Palomino | ACU02200267 |
| Custom Teal | ACU02200262 |
| Custom Navy | ACU02200263 |
| Custom Hunter | ACU02200264 |

Keeping Fit with your Spa

IMPORTANT: Always consult your physician before starting any exercise activity or program. The Ultimate Fitness series spas feature rubber exercise bands. When stretched, these bands create a high tension condition. Improper use or failure to connect the exercise bands properly may cause injury. Always inspect all of the exercise equipment prior to beginning any exercise. Do not use any damaged equipment

The fitness equipment consists of: two rowing arm bars, two 62" exercise bands, two 32" exercise bands, two 27" exercise bands, two hand grips, two ankle bands, two hand loops, and an exercise belt. This equipment attaches to the exercise anchors located on the spa walls.

Ultimate Fitness Series Exercise Program

Refer to the equipment configurations shown on the next page for the following exercises.

Seated Row

Use the exercise bars in a seated position with your feet stable, abs tight and lower back stable. Keep your palms down, arms extended with elbows slightly bent. Pull towards your chest squeezing your shoulder blades to the middle back and returning slowly to the starting position.

Standing Chest Fly

Using the exercise grips, place palms sideways facing your body with your elbows slightly bent. Pull your body forward, bringing hands together, squeezing and flexing chest muscles, then slowly returning to the starting position.

Standing Chest Press

Using the exercise grips, place your palms down with your elbows bent at 90°. Press forward bringing your hands together, squeezing and flexing your chest muscles, then slowly return to the start position.

Standing Shoulder Press

Using the exercise grips, place your palms facing away from your body with your elbows bent at 90°. Press upward bringing your hands together in front of you, above your head and slowly return to the start position.

Arm Curls

Using the exercise grips, place your hands face up with your elbows slightly bent, pull upward towards your chin squeezing and flexing your biceps then slowly return to start position.

Running or Walking

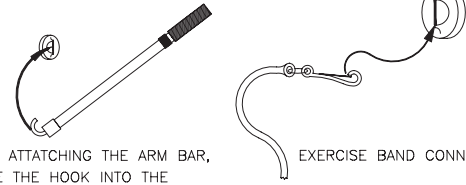
Attach the exercise belt around your waist and attach the two 62" exercise bands to the far wall of the spa. Turn on the two swim jets and walk or run into jet stream.

Leg Stretching and Strength Training

Attach an ankle band to your ankle and attach a 62" exercise band to any exercise anchor. Lift your leg to the side or back as the band provides tension.

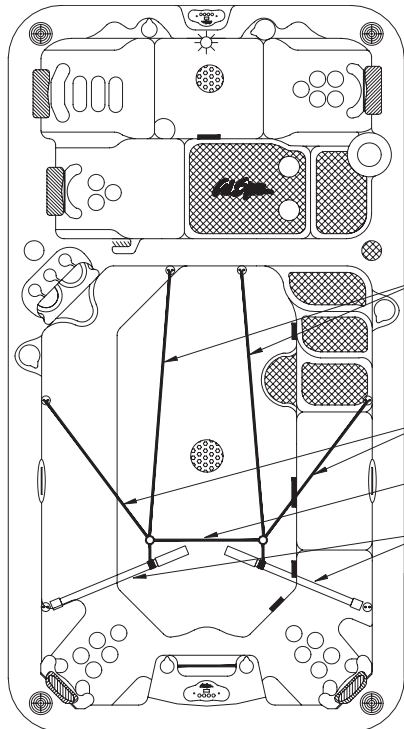
Connecting the Exercise Equipment

The drawings below show different ways the exercise kit can be connected depending on the exercises you wish to do.



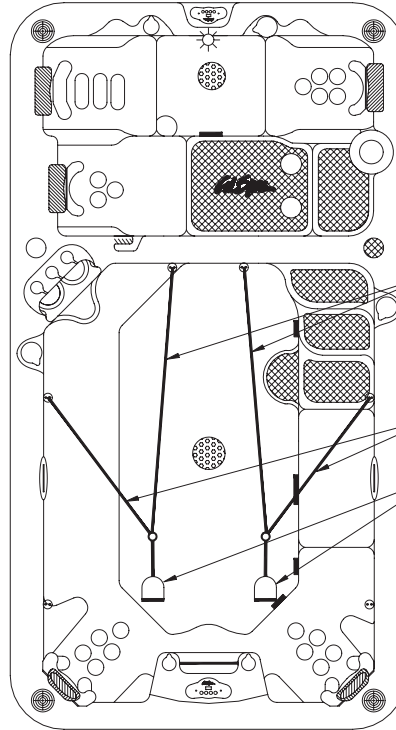
WHEN ATTACHING THE ARM BAR, PLACE THE HOOK INTO THE EYE PAD AS SHOWN.

EXERCISE BAND CONNECTION



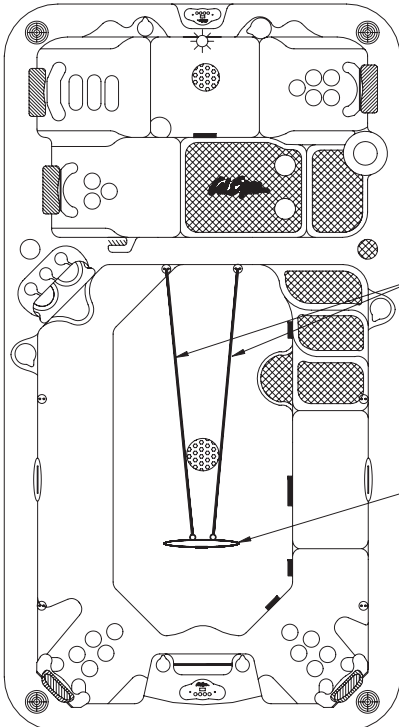
ROWING CONFIGURATION

- 62" EXERCISE BANDS
- 32" EXERCISE BANDS
- 27" EXERCISE BAND (OPTIONAL)
- ROWING BARS



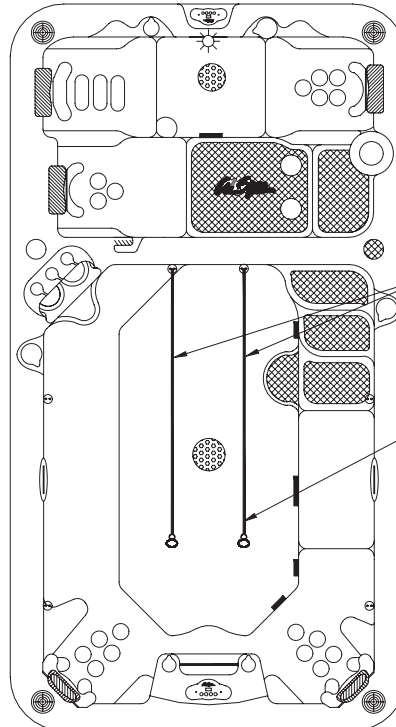
STRENGTH TRAINING CONFIGURATION

- 62" EXERCISE BANDS
- 32" EXERCISE BANDS (OPTIONAL)
- HAND GRIPS



RUNNING OR WALKING CONFIGURATION

- 62" EXERCISE BANDS
- EXERCISE BELT



STRETCHING CONFIGURATION

- 62" EXERCISE BANDS
- ANKLE BANDS

Troubleshooting

| Symptom | Possible Causes | Possible Solutions |
|---|--|---|
| System / Power Problems | | |
| System does not work | Power is turned off | Reset spa |
| Control pad and spa equipment do not operate | No electrical power to spa | Turn on or reset the GFCI circuit breaker. If this does not solve the problem, have a qualified electrician check the electrical service. |
| | The 20 or 30A fuse, depending on the system, has blown | Contact your dealer |
| The spa does not turn off | Spa is trying to heat up | Check the temperature setting is in Standard mode |
| | Spa is in filter cycle | Normal. No adjustment necessary |
| | Spa is in Standard mode | Check setting |
| Control panel displays a message | An error may have occurred | See Diagnostic Messages on page 18 for message code meanings |
| GFCI breaker trips repeatedly | Improper wiring to spa or GFCI breaker is defective | Consult with a qualified electrician |
| | There is a defective component on the spa | Contact your dealer |
| Heat Problems | | |
| Spa does not heat | Heating mode not selected | See control panel instructions on pages 12 through 16 |
| | Water level is too low | Add water to correct level |
| | No electrical power to spa | Turn on or reset the GFCI circuit breaker. If this does not solve the problem, have a qualified electrician check the electrical service. |
| | Heater is defective | Contact your dealer |
| | Gate valve is partially or fully closed | Open gate valves. Note: Never operate your spa with the gate valves closed! |
| Spa gets warm but does not get hot | Thermostat has been turned down | Set control panel to a higher temperature |
| | Insufficient filtration time | Increase filtration time |
| | Water level is too low | Add water to correct level |
| | No electrical power to spa | Turn on or reset the GFCI circuit breaker. If this does not solve the problem, have a qualified electrician check the electrical service. |
| | Dirty filter cartridge | Clean filter cartridge |
| | Gate valves closed | Open gate valves |
| | Spa cover improperly positioned | Align spa cover |
| Spa gets too hot | Filtration time is set too long | Reduce filtration cycles, especially during summer months |

| Symptom | Possible Causes | Possible Solutions |
|--|--|--|
| Water Problems | | |
| Water is not clean | For all water clarity problems, see page 24. | |
| High water consumption | Very high evaporation or heavy splashing | Use the cover and refill as necessary |
| Low water stream from the jets | Running in FILTER mode - slow speed | Select high speed jets |
| | Block wall suctions or skimmer | Clean the wall suction/skimmer. Remove blockage |
| | Dirty filter | Clean filter and replace |
| | Jets are closed | Open jets |
| | Valves closed | Open valves |
| No water stream from the jets | Pump has airlock | Remove airlock by priming spa (page 11) |
| | Jets are closed | Open jets |
| | Power switched off, system off | Reset power |
| | Pump is defective | Contact your dealer |
| | Pump fluctuations | Low water. Check level on skimmer flap |
| Water leakage from below the spa | Check the connections and empty the hoses | Close or turn off empty cycle if necessary |
| Water Pressure Problems | | |
| Jets surge on and off | Water level is too low | Add water to normal level |
| Jets are weaker than normal or do not work at all | Jet valves are partially or fully closed | Open jet valves |
| | Filter cartridge is dirty | See Cleaning the Filter |
| | Air is trapped in the pump | Open the air bleed valve on each pump's housing and allow air to bleed out of the system. Be sure to tighten each air bleed valve as soon as water starts to flow. |
| | The suction fittings are blocked | Remove any debris that may be blocking the suction fittings |
| | Gate valve is closed | Open gate valves. Note: Never operate your spa with the gate valves closed! |
| Air and Jets Problems | | |
| No airstream from the jets | Air control not open | Open the control |
| | Jet spout opening not fixed properly | Check jet spout openings |
| | Jet spout opening missing | Check jets and replace as necessary |
| Light Problems | | |
| Standard spa light does not work | Light bulb has burned out | Replace light bulb |
| | Lighting system is defective | Contact your dealer |

| Symptom | Possible Causes | Possible Solutions |
|---|--|---|
| Pump Problems | | |
| Pump runs constantly – will not shut off | Problem with circuit board | Contact your dealer |
| Noisy pump | Water level is too low | Add water to normal level |
| | Block wall suction or skimmer | Clean the wall suction/skimmer |
| | Damaged or worn-out motor block | Contact your dealer |
| | Clogged floor suction or skimmer | Clean floor suction or skimmer |
| | Leakage of air into suction line | Contact your dealer |
| | Debris is inside pump | Contact your dealer |
| | Gate valves are closed | Open gate valves. Note: Never operate your spa with the gate valves closed! |
| | Damaged or worn motor bearings | Contact your dealer |
| | Improper or defective wiring | Contact your dealer |
| Pump turns off during operation | Automatic timer has completed its cycle | Start the cycle again |
| | Pump has overheated due to the vents on the equipment door being blocked | Clear items away from vents |
| | The pump motor is defective | Contact your dealer |
| Pump has a burning smell while running | Damaged or worn motor bearings | Contact your dealer |
| Pump does not work | Power may be turned off | Reset power |
| | Pump has over heated | Let cool for one hour |
| | Incorrect or faulty wiring of electrical supply | Contact your dealer |
| | Switch is off | Auto reset after the motor has cooled down |
| | House circuit breaker tripped or in OFF position | Reset circuit breaker Contact your dealer |
| | Motor overload condition | Motor overload will reset automatically. If problem persists, contact your dealer |
| | Damaged electrical cord | Contact your dealer |
| | Pump cord not plugged in | Plug pump cord into red receptacle |
| | GFCI tripped or in OFF position | Reset GFCI |

Cal Spas™ Chemicals



Bromine/Chlorine Starter Kit

#CHE07000290/#CHE07000295

When used as directed, this product is effective as a spa and hot tub sanitizer/disinfectant. Treats 250 gallons for up to three weeks.



Vinyl & Leather Cleaner

#CHE07000620

Specifically designed to protect spa covers and pillows from chemical and ultraviolet damage.



Fast Sheen

#CHE07000610

Unique water-based, chemically reactive silicone sealant and polish. Seals, shines, and protects spa surfaces.



Brominating Tablets

#CHE07000760/#CHE07000770

Sanitizer, disinfectant for spas and hot tubs.



Chlorinating Granules

#CHE07000865/#CHE07000880

When used as directed, this product is effective as a spa and hot tub water disinfecting agent.



Go Brom

#CHE07000830

Establishes a bromide bank in spas and hot tubs.



Filter Cartridge Cleaner

#CHE07000690

Breaks down organic and inorganic material. Removes calcium scale and mineral deposits.



Liquid Hardness Increaser

#CHE07000250

Increases water hardness to reduce corrosion. Helps reduce foaming.



Spa Brite

#CHE07000580/#CHE07000590

Clears up cloudy water in spas and hot tubs. Effective at all spa and hot tub temperatures.



Foam Gone

#CHE07000800/#CHE07000810

Breaks up existing foam in spa water. Effective at all spa and hot tub temperatures.



pH-Alkalinity Up

#CHE07000720/#CHE07000730

Helps maintain pH in spas and hot tubs.



pH-Alkalinity Down

#CHE07000750

Lowers pH in spas and hot tubs.



Enzyme Formula

#CHE07000600/#CHE07000605

Emulsifies and biodegrades bodily oils, suntan lotion, and other contaminants in spas and hot tubs.



Metal Protector

#CHE07000630/#CHE07000640

Controls water discoloration caused by minerals. Special Extra Strength formula for spas and hot tubs.



Stain & Scale Prevention

#CHE07000650/#CHE07000660

Prevents minerals from damaging spa components and affecting performance.



Oxidizer Shock

#CHE07000680/#CHE07000710

Destroys organic contaminants and odor-causing wastes.

2010 WARRANTY

U.S. and Canada
Portable Spas

This limited warranty is effective for portable spas manufactured after May 19, 2010 and is only valid on portable spas delivered in the United States and Canada.

Cal Spas portable spas are warranted to be free from defects in material and workmanship. This warranty starts **from date of manufacture** and ends either by specified time-frame listed below, owner-transfer, relocation, or installation of any component other than by manufacturer.

This warranty extends through the selling dealer to the original purchaser at the original site of installation. It does not apply to special offers and events. Warranty excludes Designer Series in-ground spas.

This warranty applies only to the spa models shown below.

| | Family | Escape | Platinum | Diamond, Fitness, Galaxy |
|--|---------|---------|----------|--------------------------------|
| Spa Shell / Structural | | | | |
| LMS warrants against the loss of water through the spa shell due to defects in materials and/or workmanship. | 2 Years | 3 Years | 3 Years | 5 Years |
| Interior Surface – Altair Plus /Quarite Plus | | | | |
| LMS warrants against cracks, blisters, peeling, discoloration and delamination of Altair Plus / Quarite Plus interior surfaces. | 2 Years | 3 Years | 3 Years | 5 Years |
| Interior Surface – Standard Acrylic / Quarite | | | | |
| LMS warrants against cracks, blisters, peeling, discoloration and delamination of standard acrylic/quarite interior surfaces. | 2 Years | 3 Years | 3 Years | 5 Years |
| Equipment | | | | |
| LMS warrants the spa's electrical and electronic equipment, specifically, the control box, control panel, pumps and air blowers, against malfunction due to defects in materials and/or workmanship. | 2 Years | 3 Years | 3 Years | 5 Years |
| Plumbing | | | | |
| LMS warrants all factory installed plumbing and Eliminator™ Plus Wet Ends from loss of water due to defects in material and/or workmanship. | 2 Years | 3 Years | 3 Years | 5 Years |
| Cabinets | | | | |
| LMS warrants Cal Premium™, Cal Select™ and Cal Stone™ panels against cracking and warping. Excludes cabinet surface peeling, blistering, fading, and delamination. | 2 Years | 3 Years | 3 Years | 3 Years |
| Components | | | | |
| LMS warrants XL Heat Exchanger™ and ozonator against malfunction due to defects in materials and/or workmanship. Replacement ozone cartridge is warranted separately -- see below. | 2 Years | 5 Years | 3 Years | 5 Years |
| Electronic Entertainment Components | | | | |
| Warranty includes stereo, DVD player, iPod docking bay, speakers, power supply, subwoofer, video monitor and stand, and LED light source. Excludes light bulbs. | 1 year | 1 year | 1 year | 1 year |
| Pure XL water sanitizer | | | | |
| Excludes replacement UV lamp. | 1 year | 1 year | 1 year | 1 year |
| Ozone Cartridge | 1 year | 1 year | 1 year | 1 year |
| Spa Covers | 90 days | 90 days | 90 days | 1 year |

Manufacturer Warranty

Spa covers and stereo systems are delivered with their own manufacturer's warranty. For more information, see their warranties in the owner's information package that was delivered with your spa.

Cal Spas electronic component warranty is extended through the manufacturer of the product including, but not limited to: televisions, stereos, UV water sanitizer components, etc.

Warranty Performance

Repairs: In the event of a malfunction or defect covered under the terms of this warranty, the factory authorized selling dealer is responsible for performing all necessary repairs. To obtain service, contact the selling dealer.

In the event the consumer is unable to obtain satisfactory customer service from the selling dealer, written notification must be given to the LMS Customer Relations Department within 30 days of the reported failure.

Component Replacement: In the event of warranty component replacement, all labor costs (including removal, replacement, and installation) and shipping costs are the responsibility of the spa owner. There will be no charge for parts on a covered item. However, the LMS Service Agent may assess a reasonable travel or mileage charge per service call, which may include diagnostic time. If LMS determines that repair of a covered item is not feasible, LMS reserves the right to replace the defective merchandise with merchandise equivalent or equal in value to the original merchandise.

Product Replacement: In the event of warranty product replacement, all removal, replacement, installation and shipping costs are the responsibility of the spa owner.

Proration of Warranty

Units determined by the Company to be non-repairable will be replaced on a prorated basis with the same or a comparable unit. The user will be charged one percent of the current retail cost for each full month of ownership from the date of purchase through the date failure is determined to be non-repairable. This charge will be waived during the first twelve months of ownership.

Acts That Will Void This Warranty

This warranty is void if the spa has been subject to negligence, alteration, misuse, abuse, repairs by non-LMS authorized personnel, incorrect electrical installation, installation by unqualified personnel, installation without a permit if required by local codes, installation of any component other than by the manufacturer, acts of God (including, but not limited to, acts of nature and surrounding environments), and any other cases beyond the control of LMS.

Examples of common acts invalidating this warranty include, but are not limited to:

- Use of spa in a non-residential application.
- Scratches caused by normal use.

- Operation of spas water temperature out of the normal operating range of 32°F (0°C) to 118°F (47.8°C).
- Damage caused by incorrect water level (low, overflow, etc.).
- Damage caused by extreme weather conditions (hot, cold, etc.).
- Damage caused by dirt, sand and calcium.
- Damage caused by clogged filter cartridges. See filter cleaning recommendations in this owner's manual.
- Damage caused by continued operation of this spa with either a known or an unknown problem.
- Damage caused by tri-chlor, acids, chlorine tablets, any floating chemical devices, or any spa chemicals not authorized by LMS.
- Damage caused by improper water chemistry. (High levels of chlorine, bromine, calcium, pH and other excessive chemical levels.)
- Damage caused by direct sunlight. Spas should always be covered when not in use.
- Damage caused as a result of failure to follow operating instructions as defined within this owner's manual.
- Damage caused by incorrect electrical installation, electrical brownout, voltage spikes, or operation of spa out of voltage range by more than ±10%.
- Spas improperly installed or placed on non-approved surfaces.

For relocating your spa without voiding your warranty, contact Customer Service for relocation procedures.

Warranty Limitations

The limited warranty applies only to spas normally used for personal, family or household purposes.

Although shell cracks, which are breaks in the shell that go all the way through, are covered by this limited warranty, cosmetic scratches, gouges and crazing are not considered cracks and are not covered.

Exclusions

Replaceable service items such as filters, light bulbs, pillows, jet inserts, and filter covers are specifically excluded from the limited warranty.

Equipment adjustments (such as pressure switch adjustments) are specifically excluded from this warranty.

Disclaimers

This limited warranty is made with the express understanding that the spa is not an essential device or medical device as defined under State and Federal Law. LMS shall not be liable for loss of use of the spa or other incidental or consequential costs, expense or damages, which may include but are not limited to removal of permanent deck or other custom fixtures or the necessity for crane removal. Any implied warranty shall have duration equal of the applicable warranty stated above. Under no circumstances shall LMS or any of its representatives be held liable for injury to any person or damage to any property, however arising.

Legal Remedies

This limited warranty gives you specific legal rights and you may have other rights, which may vary from state to state.

Customer Service

See your Cal Spas dealer for a copy of the applicable warranty, details, and any questions you may have regarding the warranty coverage on your spa.

Warranties for Limited Production Models

This warranty only covers the spa models shown on page 56. Spas sold as limited production models have their own warranties which are not covered in this manual. Spa owners who purchased a limited production spa should have received a written warranty specific to their model. If you did not receive a written warranty with your spa, contact the dealer or seller. Any warranty or offer not in writing is not valid and will not be honored by LMS.

Warranty Registration

Easy Online Registration

Registering your new Cal Spas product is quick and easy! It is important that you register your Cal Spas product as soon as possible. By taking just a few quick minutes to register, you can enjoy product alerts, more efficient support, and quicker service.

Register now -- it's fast and it's easy!

- 1) Go to www.calspas.com/warranty
- 2) Fill in your information and click "Send Warranty Info"

Locating the product serial number

The serial number of your spa is located on a metal plate attached to the lower right front panel of the spa. You will need this number to properly register your spa and activate coverage. Write this information in the space provided below.

Spa Model: _____

Spa Serial Number: _____

Date Purchased: _____

Date Installed: _____

Dealer's Phone Number: _____

Dealer's Address: _____

